

SUGAR POWER

Projects Private Limited

One Stop solution from
Concept to Commissioning

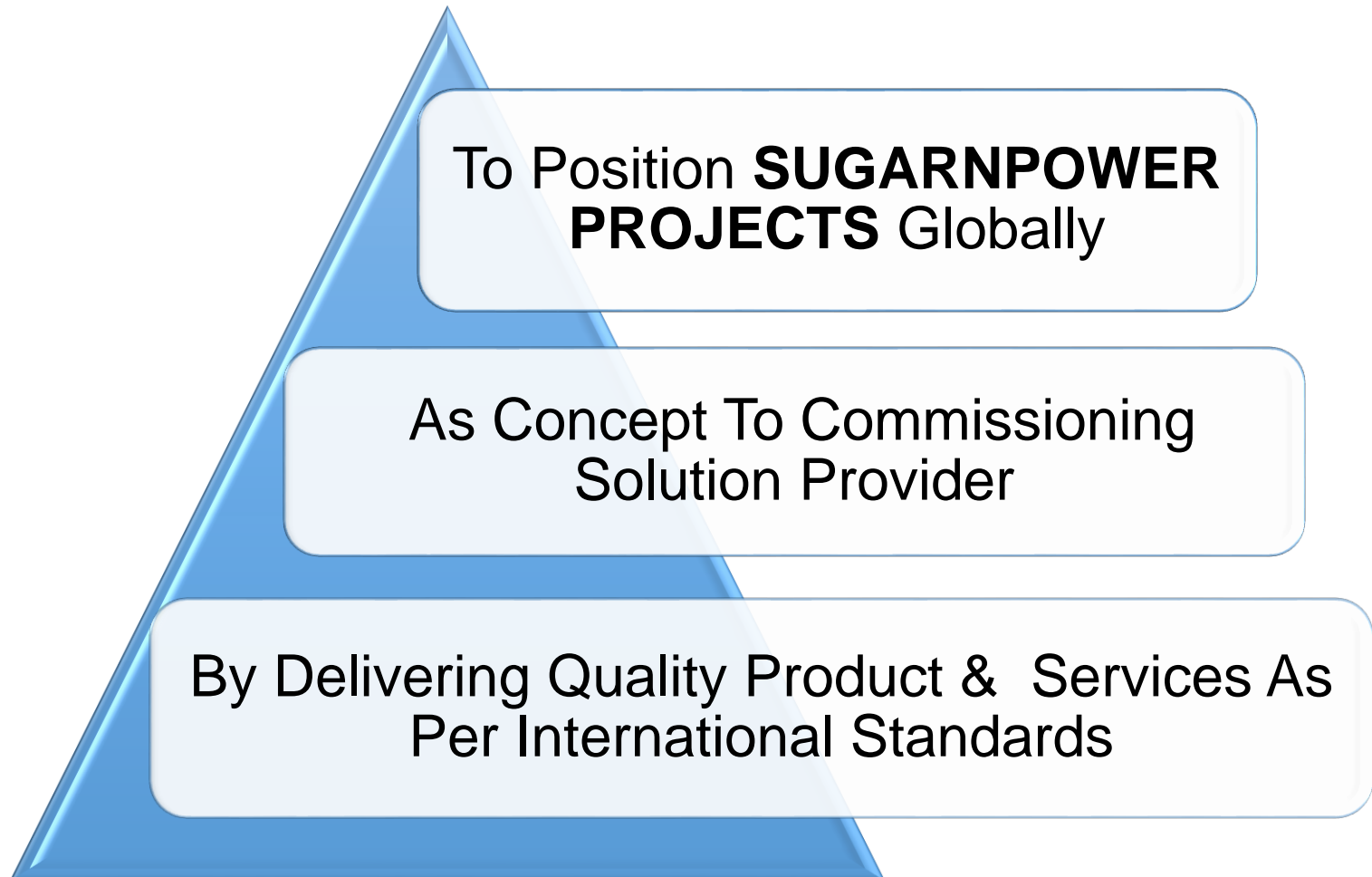
COMPANY PROFILE

ABOUT US

- Sugarnpower Projects Pvt. Ltd. is one of the fastest growing and most admired EPC companies.
- Offering engineering solution to customers across 14 countries for the past 14 years in key sectors – Sugar, Power, Distillery, Pulp & Paper, Electrical Distribution System, Plant Automation and Waste & Water treatment.
- Integrated capabilities span the entire spectrum of “design to deliver”, with a decade of a customer focused approach and a continuous quest for the world-class quality.
- Unmatched expertise across Technology, Engineering, Construction, Manufacturing, Projects and Maintain a leadership in all our major lines of business.



VISION



MISSION

To Make SUGARNPOWER PROJECTS

Ultimate Choice Of
Customers

By Offering Them:
Value Added Projects,
Product & Services

WHY US....

☐ **GLOBAL REACH:**

We operate internationally, bringing our expertise to clients around the world.

☐ **INNOVATION:**

We embrace cutting-edge technologies to provide innovative and sustainable solutions.

☐ **QUALITY ASSURANCE:**

Our commitment to quality is unwavering, ensuring the success and longevity of every project.

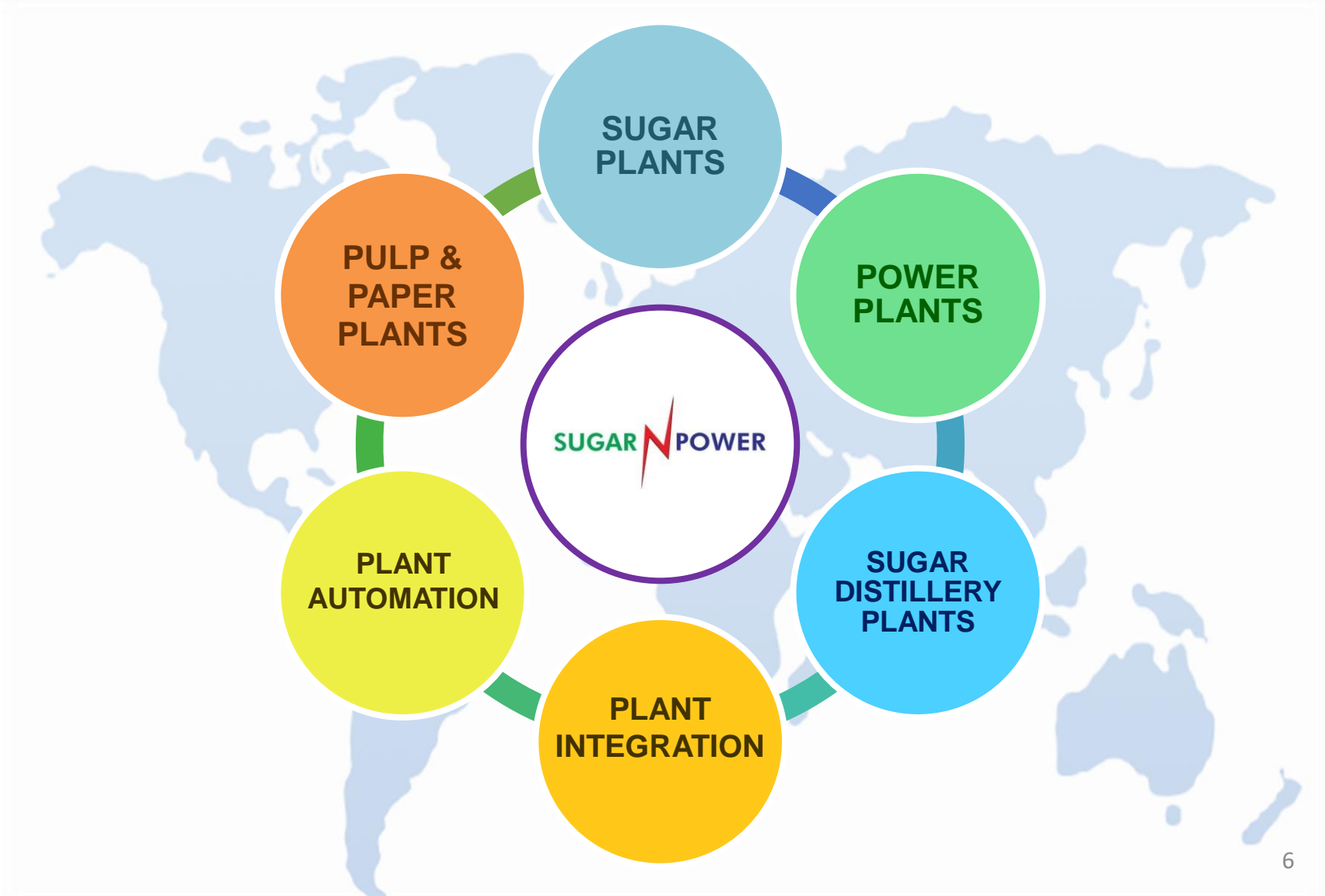
☐ **CLIENT-CENTRIC APPROACH:**

We prioritize open communication and collaboration, tailoring our services to meet the specific needs of our Clients.

☐ **EXPERIENCED TEAM:**

Our team of experts brings years of industry experience and technical know-how to every project.

BUSINESS VERTICALS



ALLIED BUSINESS AREAS

ELECTRICAL DISTRIBUTION SYSTEM

STEAM DISTRIBUTION SYSTEM

PRDS SYSTEM

WATER TREATMENT PLANTS

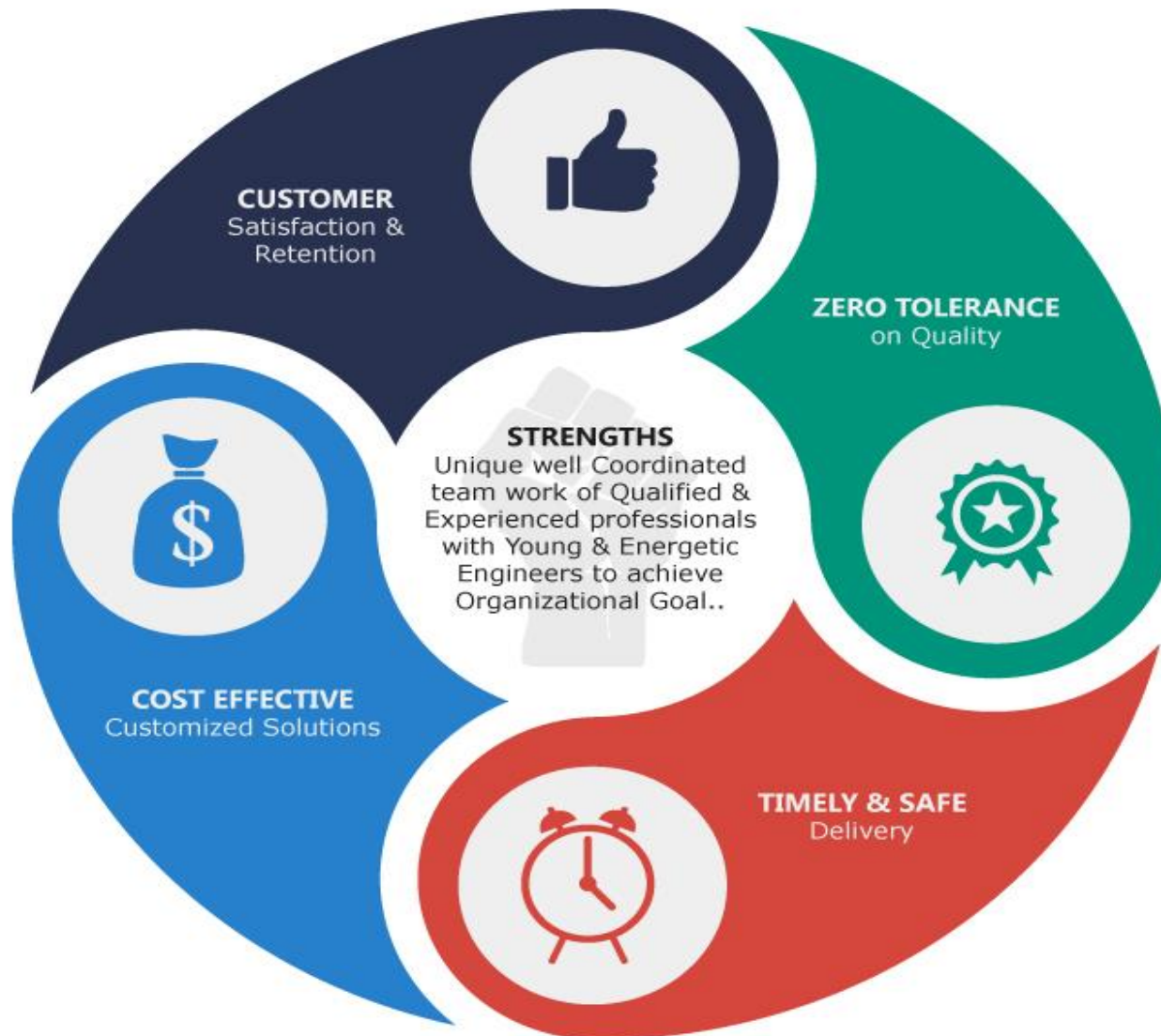
EFFLUENT TREATMENT PLANTS

AIR POLLUTION CONTROL SYSTEM

MATERIAL HANDLING SYSTEM

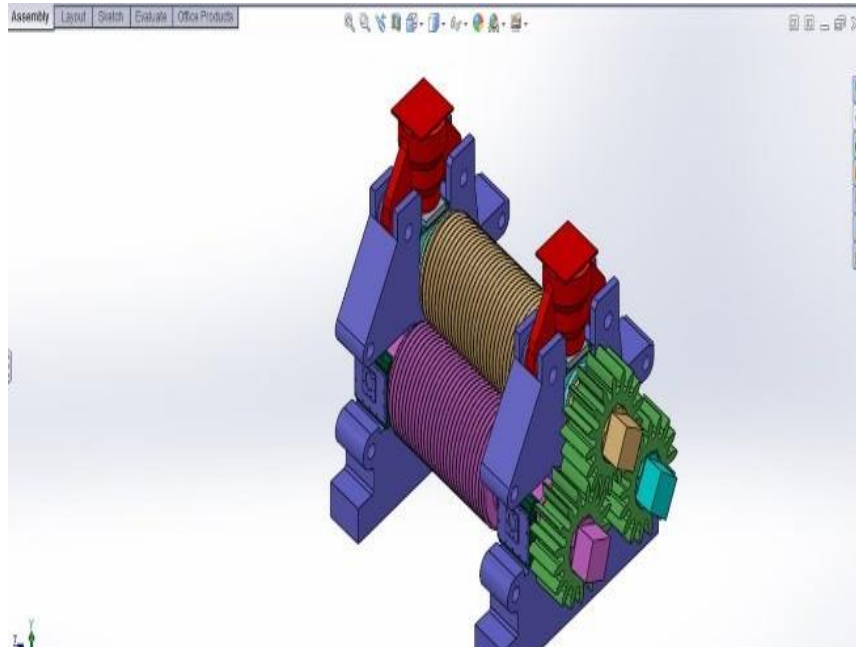
FIRE FIGHTING SYSTEM

STRENGTHS

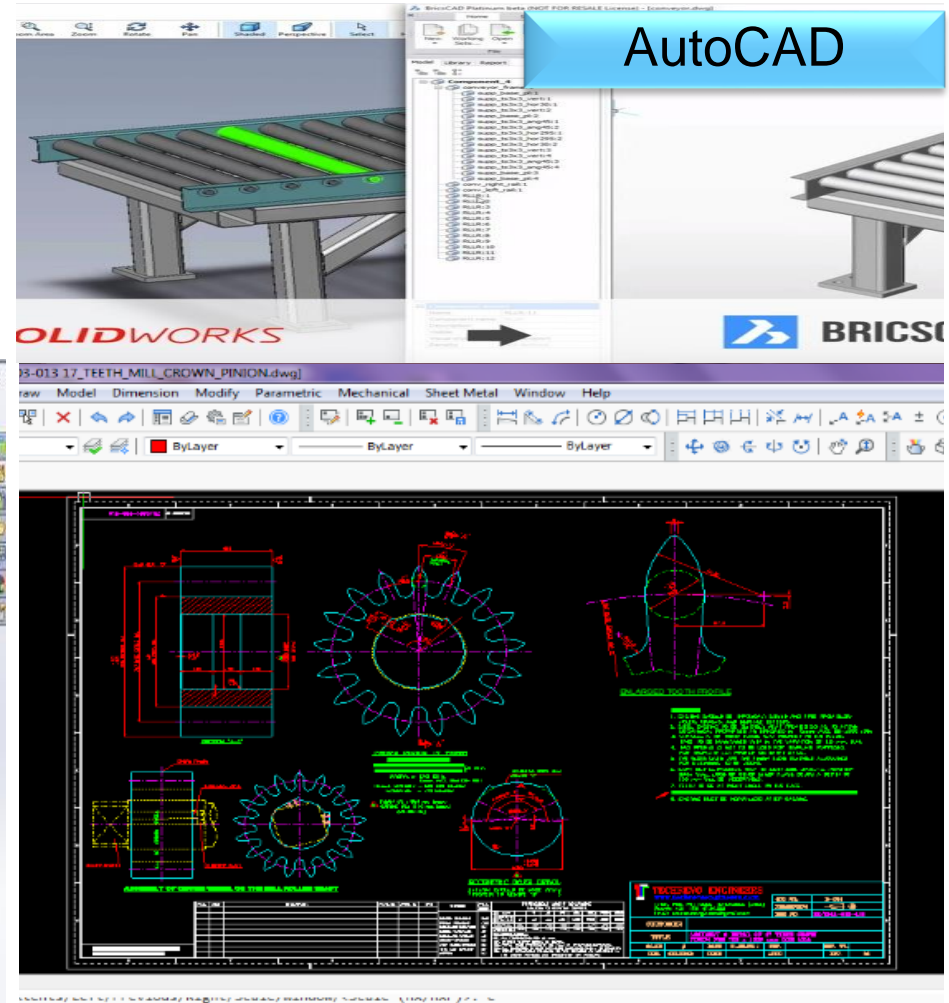


DESIGN FACILITIES

SUGARNPOWER PROJECTS
Has Complete Design Facilities:



Three Dimensional Modeling



Two Dimensional Drawing

PROJECT MANAGEMENT

Effective Use of MS Project to Manage Projects Efficiently Keeping Cost &
Time Schedule Under Control By:

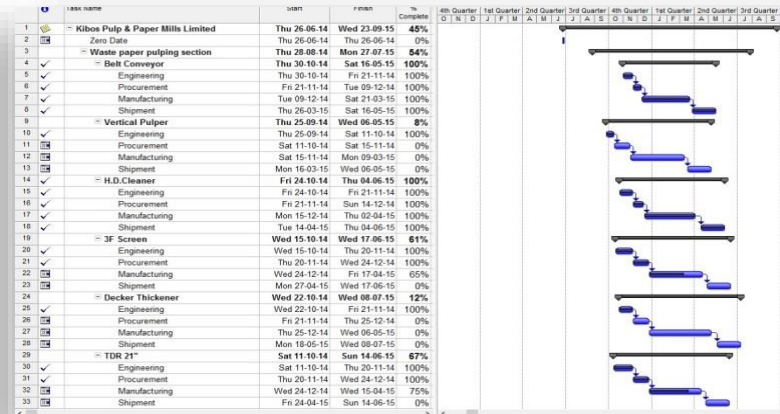
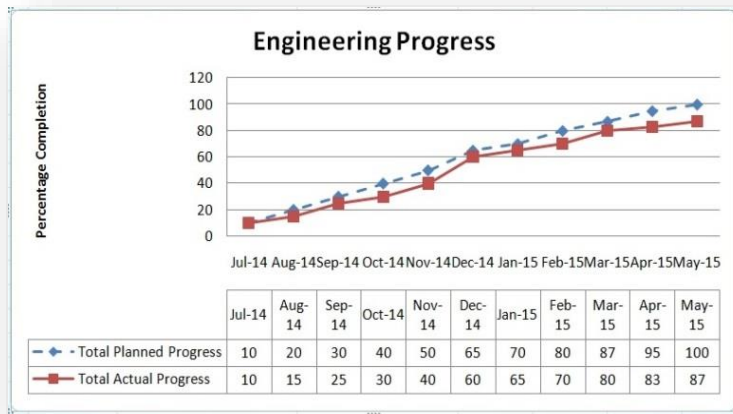
Preparing works plans like DDP, Dispatch Plan,
Construction Plan, E & C Plan

Monitoring projects on Gantt chart

Identification of Bottlenecks

Timely execution

PROJECT MANAGEMENT



S- CURVES



DISPATCH PLAN

GANTT CHART



DDP

RESOURCES & CAPABILITIES

**Sugarnpower Projects team
comprises of:**

**Well Qualified &
Experienced
Professionals With
Expertise In Their Fields**

&

**Young & Energetic
Engineers**

**Working jointly to meet all
Project Challenges.**



VALUE OFFERING: USP

Unique well Coordinated team work of Qualified & Experienced professionals with Young & Energetic Engineers to achieve Organizational Goal

Customer
Satisfaction &
Customer
Retention

Zero
Tolerance on
Quality

Timely & Safe
Delivery of
Product

Cost Effective
Customized
Solution

QUALITY MANAGEMENT SYSTEM

“No Quality Compromises”

Professional Team Ensures Quality At :

- Engineering Stage
- Product Manufacturing Stage
- Packing & Shipment Stage
- Final Installation At Site

Through

- QAP
- Stage Inspection
- Final Inspection
- Trial Run

Also offers Third Party Inspection by **SGS** ,
BUREAU VERITAS, **LLOYD'S** and others.



SUGAR PLANT & MACHINERY

SUGAR PLANT & MACHINERY

SUGARNPOWER PROEJCTS Undertakes Projects for

- Green Field Projects
 - Expansion Projects
 - Rehabilitation & Modernization
- For
- Raw Sugar
 - White Sugar
 - Refined Sugar –
 - Backend Refinery
 - Stand-alone Refinery
- Based on
- Phosphotation Process
 - Carbonation Process
- Jaggery



SUGAR PLANT & MACHINERY



CANE HANDLING SYSTEM



CANE MILLING SYSTEM



BOILING HOUSE SECTION



BAGASSE HANDLING SYSTEM

SUGAR PLANT & MACHINERY



VACUUM PAN STATION



CRYSTALLIZATION SECTION



CENTRIFUGAL STATION



SUGAR HANDLING SYSTEM

POWER PLANTS

POWER PLANTS

SUGARNPOWER PROEJCTS Undertakes Projects for

- ❖ Co-generation Power Projects
- ❖ Multi-fuel Boilers
- ❖ Bio-Mass Boilers
- ❖ Power Stations
- ❖ Rehabilitation
& Refurbishing Projects
- ❖ Balance Of Plant:
 - Steam Piping
 - PRDS Stations
 - Water Treatment Plant
 - Cooling Towers



POWER PLANTS



BOILER



TURBINE



ID FAN



DEAREATOR



BOILER FEED PUMP

PULP & PAPER PLANTS

PULP & PAPER PLANTS

SUGARNPOWER PROEJCTS Undertakes Projects for

- Waste Paper Pulping System
- Agro Based Pulp Mill
- Chemical Recovery System
- Kraft / Writing / Printing Paper Plant
- Corrugation Plant & Box Making Machinery



PULP & PAPER PLANTS



PAPER MACHINE



CORRUGATION MACHINE



DRYER



CONTINUOUS DIGESTER

SUGAR DISTILLERY



SUGARNPOWER PROEJCTS Undertakes Projects for

- Sugarcane Juice Based
 - Molasses Based
- For
- Ethanol
 - Industrial Alcohol
 - Portable Alcohol



FERMENTATION & EVAPORATION



PRODUCT STORAGE 25

ELECTRICAL DISTRIBUTION SYSTEM

ELECTRICAL DISTRIBUTION SYSTEM



PCC PANEL

- ❖ Power distribution system
- ❖ Synchronization of Turbine, DG & Grid
- ❖ HT distribution & Switchyards
- ❖ LT distribution
- ❖ Drives system



MCC PANEL



MCC PANEL

ELECTRICAL DISTRIBUTION SYSTEM



**STANDALONE
STATOR PANEL**



CAPACITOR PANEL



PCC PANEL



VFD PANEL



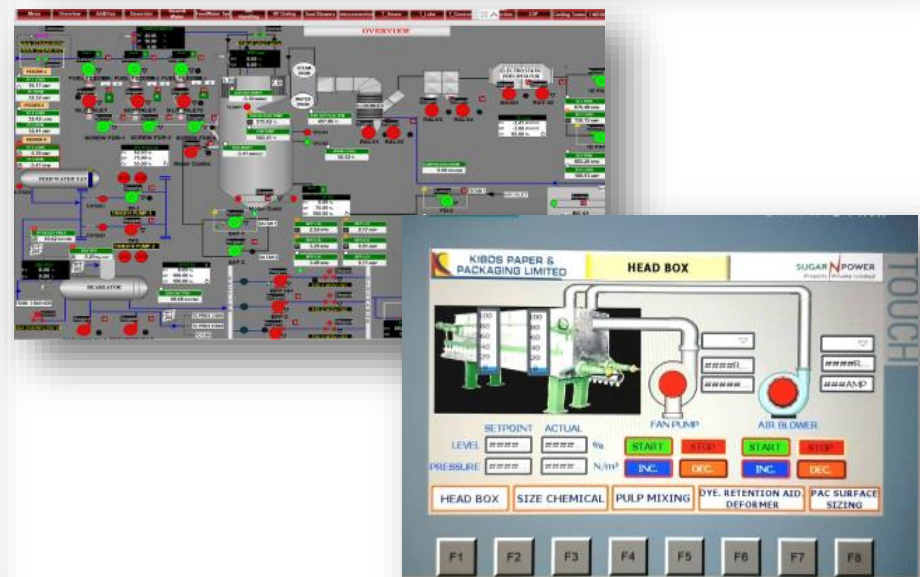
HT PANEL

PLANT AUTOMATION

PLANT AUTOMATION



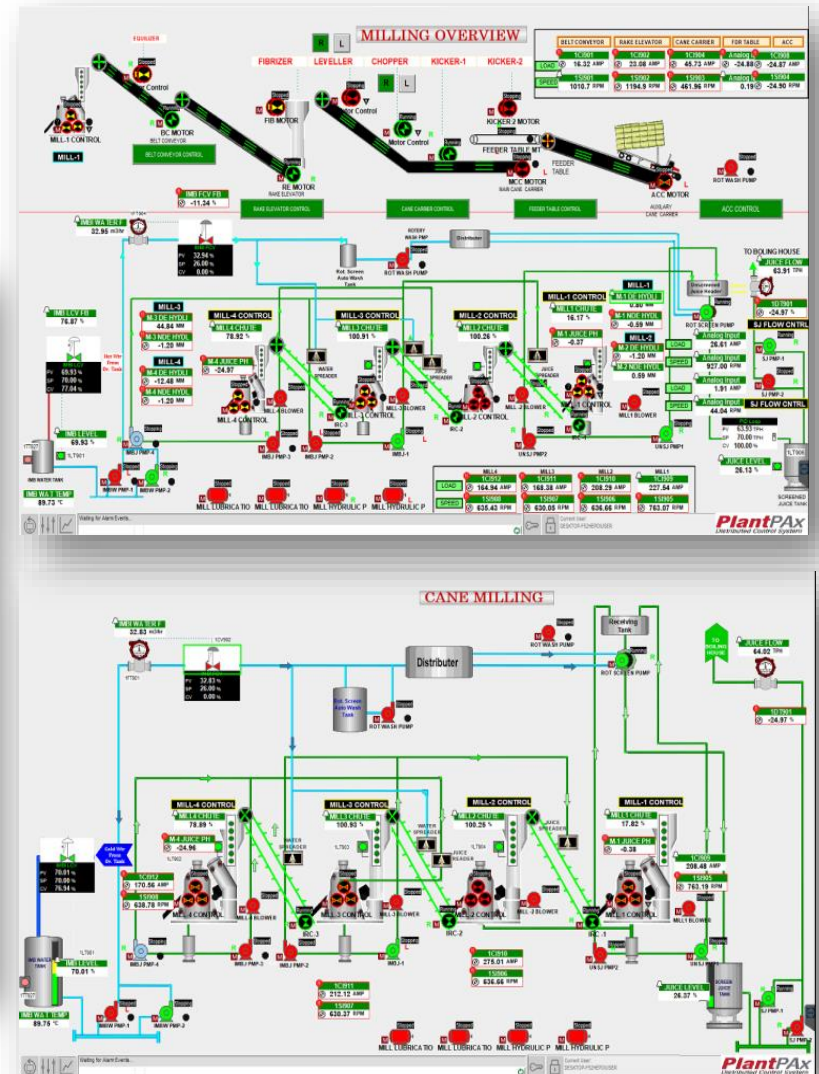
- ❖ Sugarcane mill automation
- ❖ Sugar process house automation
- ❖ Power plant automation
- ❖ Pulp & paper plant automation
- ❖ Any process automation



PLANT AUTOMATION

SUGARCANE MILL AUTOMATION

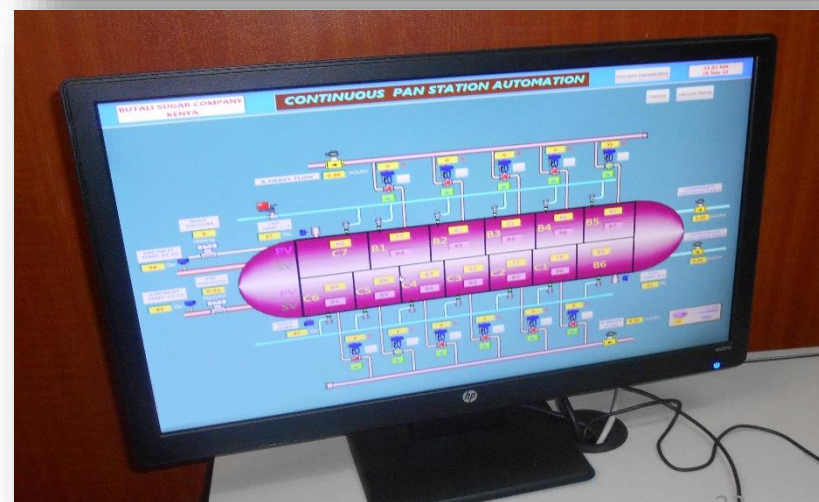
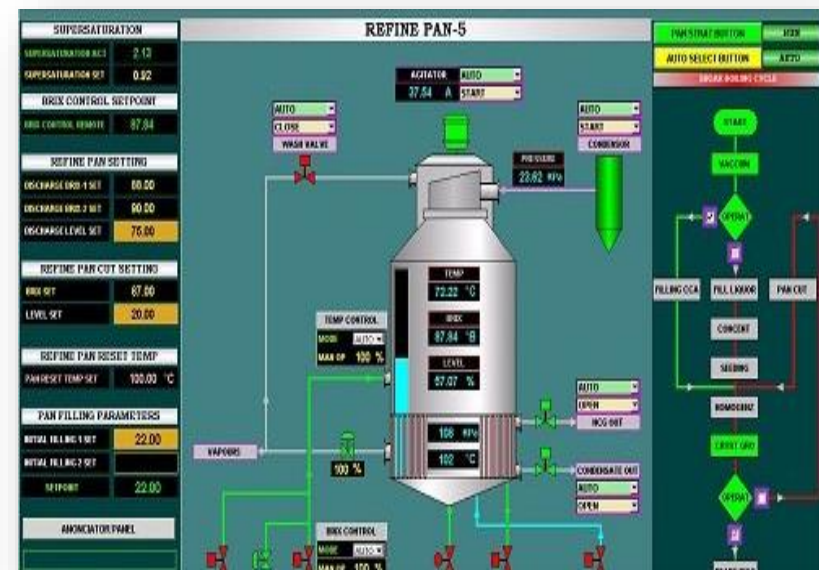
- ❖ Auto cane feed control system
- ❖ Preparatory devices & mill control system
- ❖ Donnelly chute level control system
- ❖ Cane blanket level sensor & roller lift control system
- ❖ Lubrication oil pressure alarm
- ❖ Imbibition water flow control system
- ❖ Measuring bearing temperature
- ❖ Juice flow stabilization system



PLANT AUTOMATION

SUGAR PROCESS HOUSE AUTOMATION

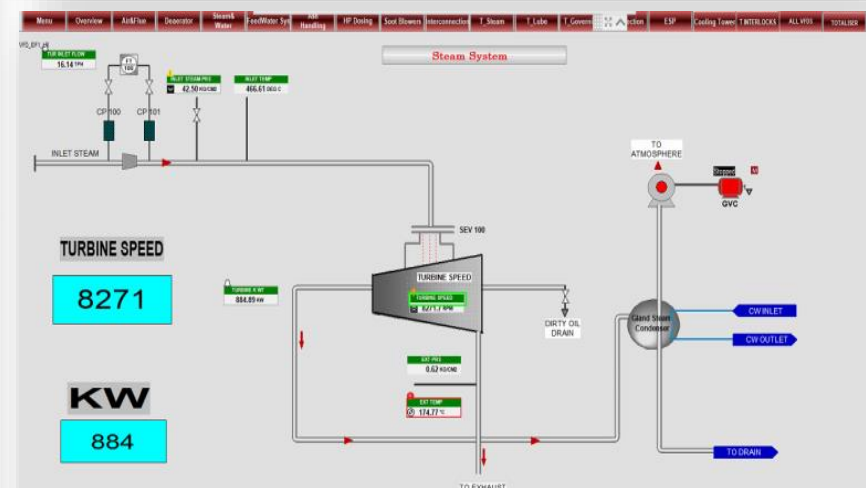
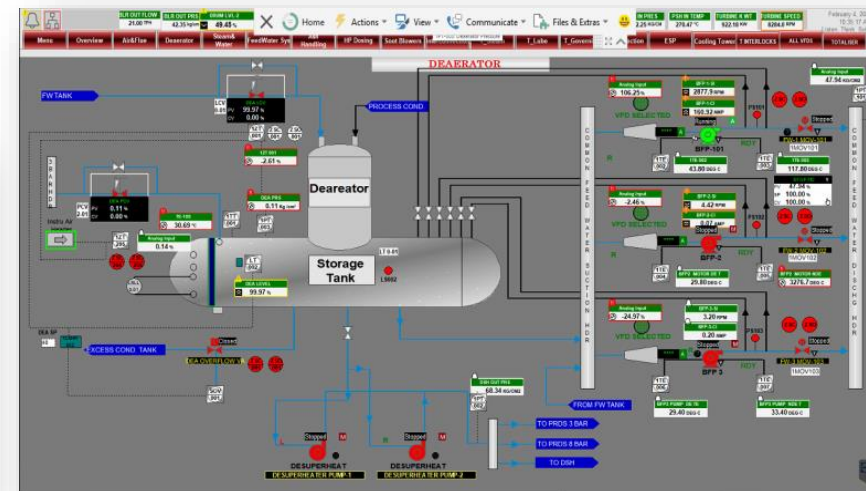
- ❖ Juice weighment system
- ❖ Juice heater control system
- ❖ pH & lime dosing control system
- ❖ Evaporator level & brix control system
- ❖ Batch & continuous pan automation
- ❖ Centrifugal machine automation
- ❖ Steam stabilization system
- ❖ Sugar melter
- ❖ Molasses conditioner automation
- ❖ Condenser automation



PLANT AUTOMATION

POWER PLANT AUTOMATION

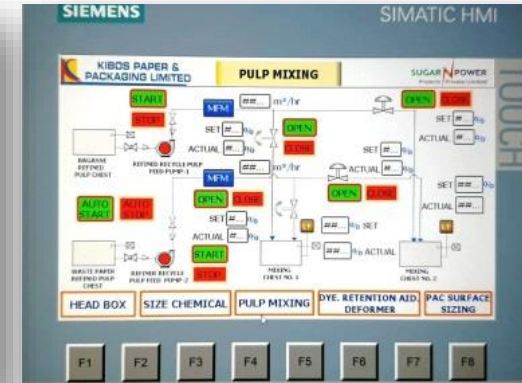
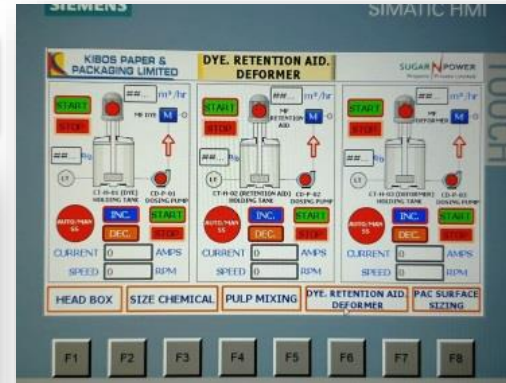
- ❖ Fuel handling & feeding system automation
- ❖ Boiler combustion automation
- ❖ Feed water control system
- ❖ Steam drum level control system
- ❖ Boiler PRDS control system
- ❖ Ash handling automation
- ❖ Boiler deaerator pressure & level control system
- ❖ Turbine vibration monitoring
- ❖ Lube oil control system
- ❖ Turbine safety protection system



PLANT AUTOMATION

PULP & PAPER PLANT AUTOMATION

- ❖ Paper machine drive
- ❖ Pulp mixing & ratio control
- ❖ Head box automation
- ❖ GSM scanner
- ❖ Consistency control
- ❖ Pulper automation
- ❖ Stock preparation
- ❖ Chemical preparation & dosing system
- ❖ Steam & condensate system
- ❖ Water distribution & recycling system



BALANCE OF PLANT & AUXILIARIES

BALANCE OF PLANT / AUXILIARIES

STEAM DISTRIBUTION SYSTEM

- ❖ HP, MP & LP Steam Piping & fittings
- ❖ PRDS Stations
- ❖ Interconnection of Boilers
- ❖ HP & LP Steam distribution headers



BALANCE OF PLANT / AUXILIARIES

ENVIRONMENTAL SOLUTIONS

- Effluent treatment plants
 - ❖ 2200 m³/day ETP plant
 - ❖ 500 m³/day ETP plant
- Water treatment plants
 - ❖ 300 m³/hr WTP plant
- Air pollution control system



BALANCE OF PLANT / AUXILIARIES

MATERIAL HANDLING SYSTEM

- Belt conveyors
- Screw conveyors
- Elevators
- Carriers
- Slat Chain Conveyors
- Portable Belt Conveyors



BALANCE OF PLANT / AUXILIARIES

COOLING TOWERS & SPRAY PONDS

- ❖ 1200 m³/hr. cooling tower
- ❖ 400 m³/hr. cooling tower
- ❖ 300 m³/hr. cooling tower
- ❖ Hot condensate cooling tower of capacity 150 m³/hr.
- ❖ 90 m³/hr. cooling tower



FIRE FIGHTING SYSTEM

- ❖ Fire Pump House / Fire Hydrant System
- ❖ Fire Extinguisher System
- ❖ Addressable Fire Alarm System
- ❖ Conventional Alarm System
- ❖ Water Sprinkler / Foam Flooding System



EQUIPMENT & SPARES

EQUIPMENT & SPARES



HILO UNLOADER



HYDRAULIC GRAB



GOLIATH CRANE

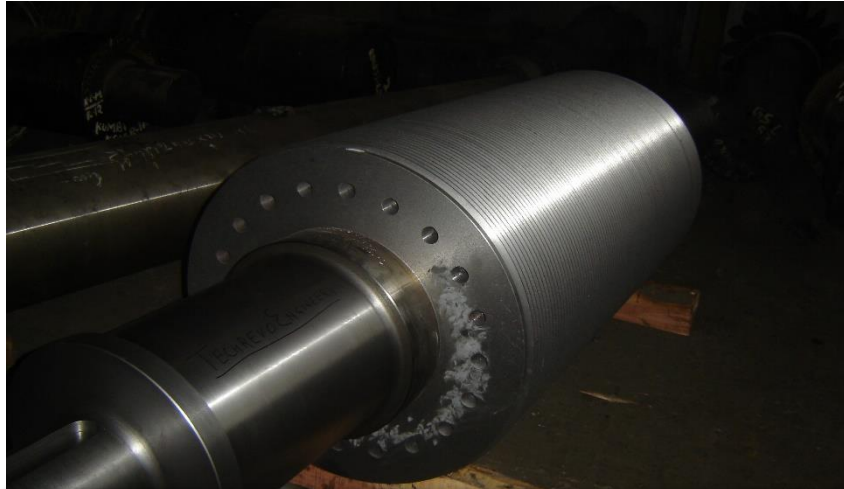


EOT CRANE



CANE HANDLING EQUIPMENT

EQUIPMENT & SPARES



MILL ROLLER



CROWN PINION



TRASH PLATE



CHAINS

EQUIPMENT & SPARES



CANE LEVELLER



HAMMER TIPS



TOOTHED UNDER FEED ROLLER (TUFR)



CANE CHOPPER

EQUIPMENT & SPARES



HAMMERS



KNIVES



BEARING HOUSING



IDLER PULLEYS

EQUIPMENT & SPARES



JUICE HEATER



VACUUM FILTER



CONTINUOUS VACUUM PAN



CENTRIFUGAL MACHINES

EQUIPMENT & SPARES



ECONOMISER COILS



BOILER BANK TUBES



GRATE CHAINS

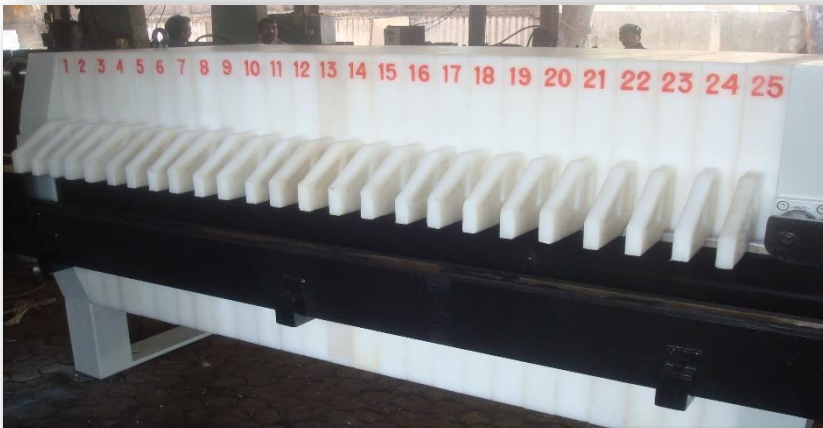


SKID BAR

SPECIAL PURPOSE EQUIPMENT



1 TPH BOILER



FILTER PRESS



COOKING POT

GAS EQUIPMENT (CO₂ PLANT)



CO₂ STORAGE TANK



CO₂ PLANT EQUIPMENT



CO₂ PLANT SKID



CO₂ PLANT SKID

GAS EQUIPMENT (OXYGEN PLANT)



OXYGEN PLANT (PSA TOWERS)



CONTROL PANEL

SERVICES

SERVICES

- **Project Studies**
- **Feasibility & Detailed Project Reports**
- **Engineering Services**
- **Project Management**
- **Procurement Services**
- **Quality Management Systems**
- **Expediting and inspection services**
- **Construction management**
- **Supervision services**
- **Commissioning services**
- **Performance testing services**
- **Operational services**



PROJECT STUDIES

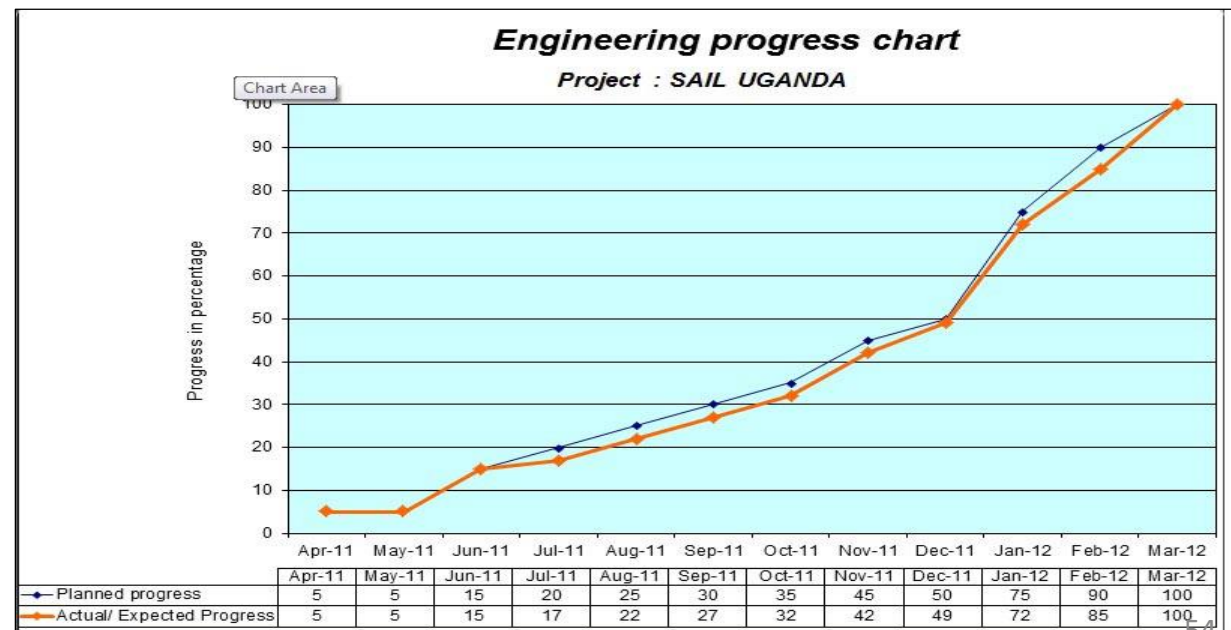
- ➔ This includes, sufficient engineering to determine the duty specifications for the equipment suppliers.
- ➔ Technology selection for the Sugar/Power/Paper/ Pulp Factory and visits to the reference plants of the potential suppliers.
- ➔ Follow up with the financial consultant and assisting in preparing bankable financial models.
- ➔ Provide assistance in finalizing plant layouts, general arrangement drawings and compilation of basic engineering data.

FEASIBILITY AND DETAILED PROJECT REPORTS

- ➔ Project Survey, Feasibility Study and preparing a business plan
- ➔ Comprehensive Study of Local Conditions encompassing cane development, sugar production and sales networking.
- ➔ Sensitivity Analysis and R.O.I Studies
- ➔ Delivering a bankable feasibility report
- ➔ Manpower planning
- ➔ Assistance in recruitments
- ➔ Training

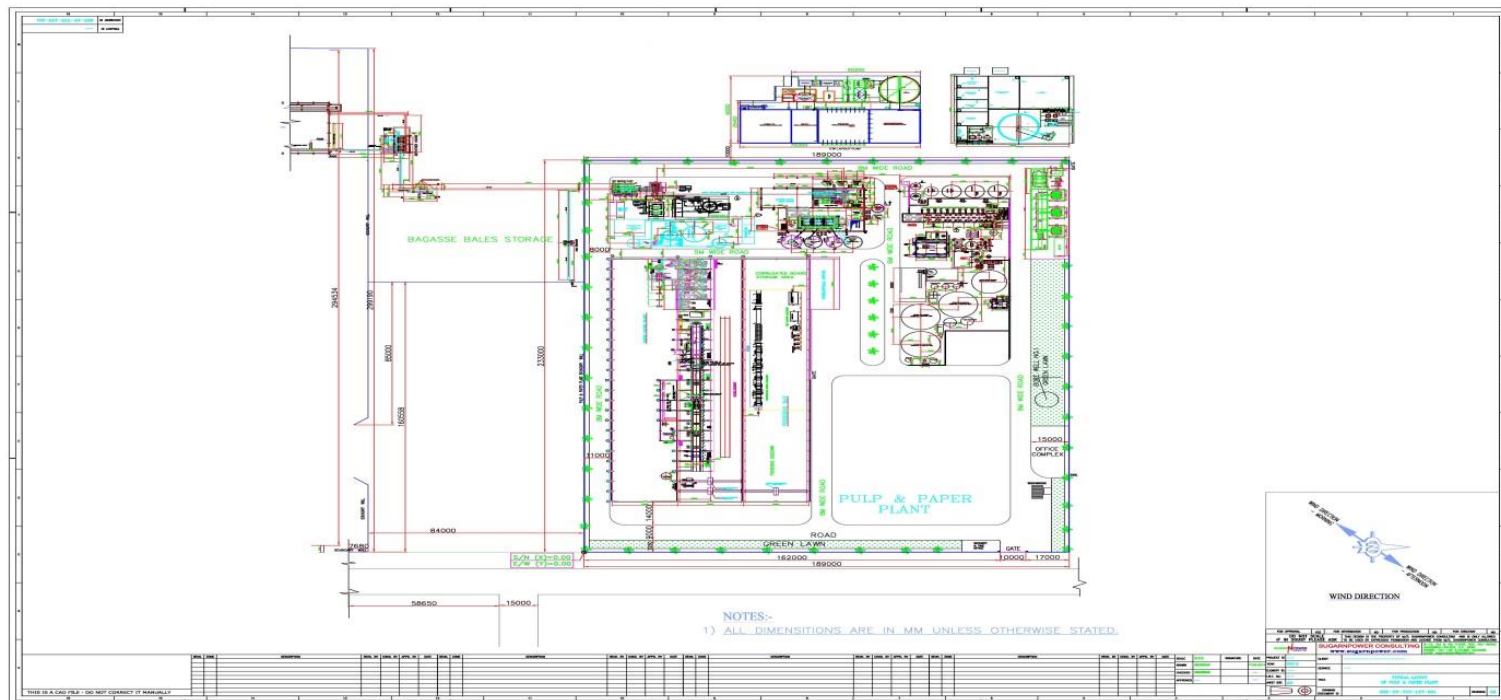
BASIC ENGINEERING SERVICES

- ➔ Composing master factory plans in line with site topography & ground conditions
- ➔ Drawing basic engineering documents & specifications for prospective suppliers to conduct detailed engineering
- ➔ Services/utilities – Power, water and effluent treatment plants



DETAILED ENGINEERING SERVICES

- ➔ Provide assistance in finalising plant layouts, overall site General Arrangement (GA) drawing and compilation of basic engineering data.
- ➔ Develop an optimum procurement philosophy for work package.

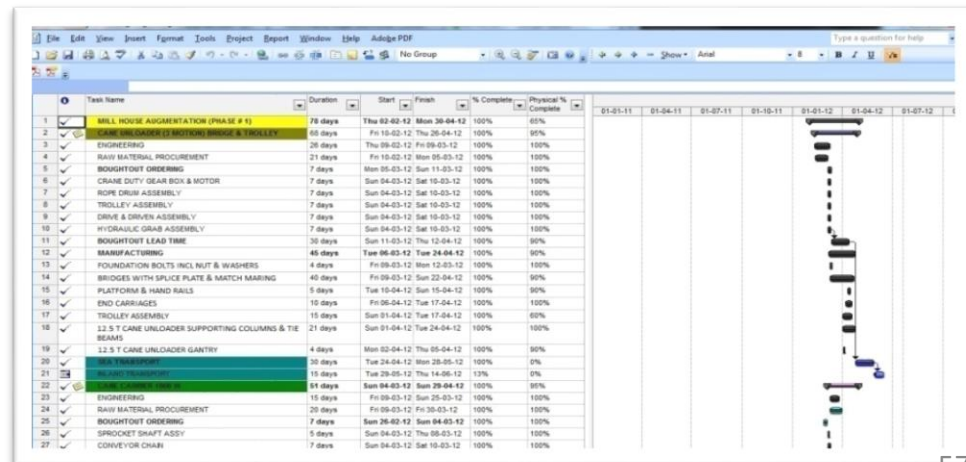


DETAILED ENGINEERING SERVICES



PROJECT MANAGEMENT

- ➔ This includes, master project plans, work package plans, coordination plans, manufacturing plans & Quality assurance plans.
- ➔ Attending Kick-off meetings with clients & main equipment Suppliers and periodic Project review meetings.
- ➔ Approval of price breakup, monitoring contractual performance of EPC companies.
- ➔ A time management system to track the project progress against a baseline schedule including the reports.



PROCUREMENT SERVICES

- ➔ Develop a procurement philosophy for work package.
- ➔ Prepare tender documentation, tender queries, tender adjudication & commercial negotiations with suppliers
- ➔ Appraisal & evaluation of prospective suppliers.



QUALITY MANAGEMENT SERVICES

- ➔ Documentation & Control
- ➔ Monitoring & Control
- ➔ Manufacturing checks and balances
- ➔ Packing standards & equipment preservation
- ➔ Site receipts, storage and traceability
- ➔ Installation & Commissioning protocols
- ➔ Performance Test criteria

SUGARPOWER PROJECTS PRIVATE LIMITED QUALITY ASSURANCE PLAN									
QAP REF. No. : QAP/20-22/005		Name of product/Part : Mill TURN		Dated : 01-09-2020		FORMAT No. :- 201		Rev. No. :- 00	
						Date :- 09-03-2020		Sheet :- 4/1	
Sr. No.	Description	Characteristics	Method	Extent of Check	Acceptance Norms	Inspection	Remarks		
						Internal provider	SNPPPL		
1.	Raw Material								
1.1	Shell Plate	Chemical & Mechanical testing	Chemical & Physical Testing	100.00%	Approved tech. specification	P	R/W		
1.2	Shaft	1. Chemical & Mechanical testing 2. NDT	1. Chemical & Mechanical testing 2. UT	100%	Approved tech. Specification & Drawing ASTM - A388	P	H		
1.3	Forged Hub	1. Chemical & Mechanical testing 2. NDT	1. Chemical & Mechanical testing 2. UT	100%	Approved tech. Specification & Drawing ASTM - A388	P	H		
2.	In Process								
2.1		Shell rolling	Template	100%	Approved tech. Specification & Drawing	P	R/W		
2.2		Holes marking and drilling	Visual & Measurement	100%	Approved tech. Specification & Drawing	P	R/W		
2.3		Shaft machining	Visual & Measurement	100%	Approved tech. Specification & Drawing	P	W		
2.4		Devise fit-up of shaft	Visual & Measurement	100%	Approved tech. Specification & Drawing	P	H		
2.5		Teeth profile	Visual & Measurement	100%	Approved tech. Specification & Drawing	P	R/W		
2.6		Teeth marking and fit-up	Visual & Measurement	100%	Approved tech. Specification & Drawing	P	R/W		
2.7		Teeth welding	Visual	100%	Approved tech. Specification & Drawing	P	R/W		
2.8		NDT of final welding	DPT	100%	Approved tech. Specification & Drawing	P	R/W		
2.9		Fitment of nozzles	Visual & Measurement	100%	Approved tech. Specification & Drawing	P	R/W		
3.	Final Inspection								
3.1		Final Assembly & Center marking	Visual & Measurement	100%	Drawing	P	H		
3.2		Handphone	Visual & Measurement	100%	Drawing	P	H		
3.3		Dynamic Balancing	Visual & Measurement	100%	Approved tech. Specification & Drawing	P	H		
3.4		Final painting & match marking	Visual & DPT Measurement	100%	Approved tech. Specification & Drawing	P	H		


Sandeep Tewari

(Prepared By)

(Reviewed By)

(Approved By)

Legend :- P- Performer, W- Witness (Inform SNPPPL with the date of inspection, in the absence of Visit External provider can do self inspection, record & proceed), R- review of records of External provider, H- Hold by SNPPPL, External provider should not proceed until SNPPPL acceptance



INSPECTION CONFIDENTIAL

FORMATE

FORMATE NO. : 2001

REV. NO. : 00

PAGE : 1 OF 1

DATE : 01/02/2012

INSPECTION REPORT

Confidential

Inspection Date:		01.02.2012	
Inspection Report No.:		SNP/SAIL/003	
Client:		SAIL,UGANDA	
Inspection at :		ISGEC WORKS,YAMUNANAGAR	
Represented by:		Mr.Praveen Bansal	
Items Inspected:		Headers (Hydrotesting, Dimensional checks)	
Reference Documents:	1.		WO NO.JB0811(REV0) DATED 13.05.2011 JOB NO PH-0023 DRG NO JB0811-50030100 REV 00
	2.		WO NO.JB0811(REV0) DATED 13.05.2011 JOB NO PH-0023 DRG NO JB0811-50040100 REV 00
	3.		WO NO.JB0811(REV0) DATED 13.05.2011 JOB NO PH-0023 DRG NO JB0811-50030100 REV 01

S. No.	Inspection Description	Required	Actual	Remarks, if any
1	WO NO.JB0811(REV0) DATED 13.05.2011(PRIMARY SUPERHEATER HEADER) JOB NO PH-0023 DRG NO JB0811-50030100 REV 00 (ITEM NO:PSH001)			
1.1	HYDRO TEST			
	Set temp: 26 ^o C, Hydro test pressure: 90kg/cm ² , hold time: 30min			Ok
1.2	DIMENSIONAL CHECKS			
a.	Overall length	5404mm	5403mm	Ok
b.	Distance from R.H.S			
	Support pad	490mm	491mm	Ok
	Stubs	666mm	668mm	Ok
c.	Distance from L.H.S			
	Support pad	250mm	252mm	Ok
	Stubs	426mm	428mm	Ok
d.	Height of stubs/nozzle			
	Stubs	260mm	290-310mm	Ok

EXPEDITING AND INSPECTION SERVICES

- ➔ This includes, design reviews & approvals of major drawings, quality control visits during the manufacturing, including signing off of equipment prior to shipping.
- ➔ Ensuring sequential dispatches by suppliers with respect to construction activities.



CONSTRUCTION MANAGEMENT

- ➔ Monitoring construction activities of the contractor.
- ➔ To synergize & prioritize construction activities matching with equipment supply schedules.
- ➔ Preparing punch points & detailed schedules for commissioning activities.



CONSTRUCTION MANAGEMENT

- ➔ Monitoring construction activities of the contractor.
- ➔ To synergize & prioritize construction activities matching with equipment supply schedules.
- ➔ Preparing punch points & detailed schedules for commissioning activities.



SUPERVISION & COMMISSIONING SERVICES

Supervision Services

This includes design reviews, quality control visits, logistics and shipment control.

- ➡ **Site Construction supervision & control**
- ➡ **Civil, Mechanical, Electrical**
- ➡ **Instrumentation & Automation**
- ➡ **Site machinery & manpower control**

Commissioning Services

- ➡ **Layout control.**
- ➡ **Verification of civil drawings and checking equipment foundations.**
- ➡ **Ensuring contractor's adherence to inspection protocols and documentation.**
- ➡ **Taking lead during equipment trials & commissioning activities.**

PERFORMANCE TESTING SERVICES

- ➔ Strict adherence & compliance to contractual & specified performance trial criteria
- ➔ Documentation and Signing off



BOILER LIGHT UP



HYDRO TEST



TRUCK TIPPLER TRIAL

FACTORY OPERATIONS

- ➔ Optimization of efficiencies from cane handling to packing
- ➔ Automation of plant & process
- ➔ De-bottlenecking of plant & process
- ➔ Steam consumption < 32% on cane with process steam minimization by adoption of latest economy measures and equipments.
- ➔ Minimization of power consumption & utilization of saved power to supply to grid/by-products processing/irrigation in captive plantations.
- ➔ Minimization of sugar losses.
- ➔ Minimization of downtime by adoption of different maintenance techniques in off-season pro-active & preventive maintenance during season.
- ➔ Manpower planning/training of personnel
- ➔ Value engineering
- ➔ Energy Audits & evaluation/devise schemes to minimize energy consumption.

FACTORY OPERATIONS

- ➔ Raw, Plantation white & refined sugar – Adoption of suitable process for sugar production – meeting quality requirements of products as per respective international standards.
- ➔ Assisting clients in optimization & prioritization of Capex planning – season & off season.
- ➔ Assisting clients for Merger & Acquisition activities and valuation of projects
- ➔ Pollution control-water & air including EIA studies. Technical assistance to clients for environmental clearance.
- ➔ Assisting clients in ISO Certification & setting up reporting & MI systems.

DELIVERABLES

Pre-Engineering:

Project Definition Document

Basic technical specifications for each work package

Agricultural design and engineering package

Procurement:

Enquiry documents for each work package

Tender documents and adjudication report

Contract negotiations and placements

Project Management:

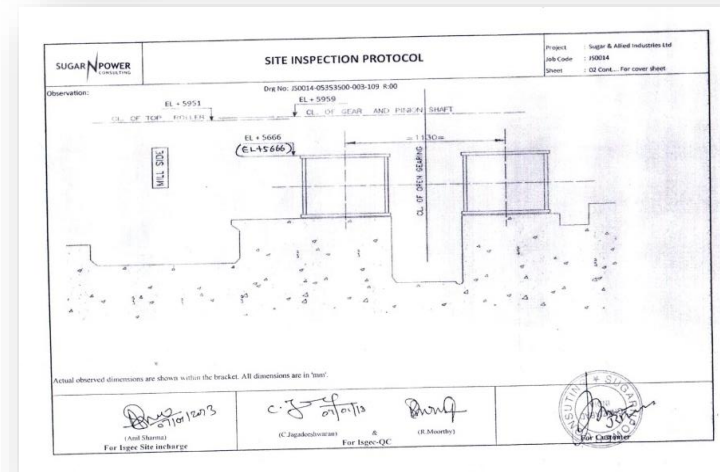
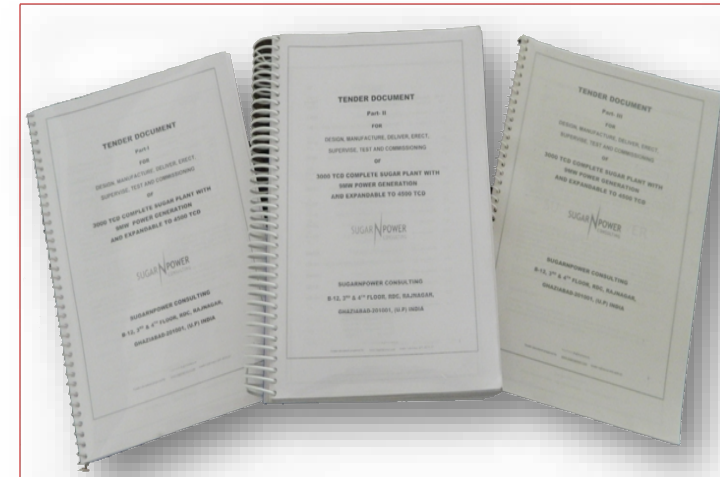
Monthly progress reports

Minutes of meetings with suppliers

Quality control reports as per the approved QAPs

Performance acceptance tests records

Commissioning and handing over



OUR PROJECTS

OUR PROJECTS FOR SUPPLY

PROJECTS EXECUTED

Customer Name : Kibos Paper & Packaging Limited, Kenya

Assignment : Industrial Oxygen Plant

Duration : 3 Months

Value of the Project : 165,000 USD



PROJECTS EXECUTED

Customer Name : Kibos Distillers Limited, Kenya

Assignment : PRDS & Steam Piping

Duration : 16 Weeks

Value of the Project : 65,150 USD

Customer Name : Tamtamz Limited, Kenya

Assignment : 1 TPH Boiler & Auxiliaries including Steam & Electrical
Distribution System

Duration : 2 Month

Value of the Project : 71,975 USD

PROJECTS EXECUTED

Customer Name : United Sugar Company

Assignment : Auto Seed Slurry Dosing System of Sugar Refinery's Vacuum Pans

Duration : 18 Weeks

Value of the Project : 77,600 USD



PROJECTS EXECUTED

Customer Name : Kibos Paper & Packaging Limited

Assignment : Automated Chemical Preparation & Dosing System for Pulp & Paper Plant

Duration : 16 Weeks

Value of the Project : 86,425 USD



PROJECTS EXECUTED

Customer Name : Kibos Paper & Packaging Limited

Assignment : Automation System for Head Box & Pulp Mixing Ratio Control

Duration : 10 Weeks

Value of the Project : 46,115 USD

Customer Name : Kibos Sugar & Allied Industries Limited

Assignment : Turbine Bleed Steam Line Interconnecting to Process House

Duration : 14 Weeks

Value of the Project : 17,000 USD

PROJECTS EXECUTED

Customer Name : Kibos Paper & Packaging Limited

Assignment : Automation System for Head Box & Pulp Mixing Ratio Control

Duration : 10 Weeks

Value of the Project : 46,115 USD

Customer Name : Alteo Milling

Assignment : Electric Steam Boiler 200 KW Capacity for Generating Steam
@300 Kg/hr

Duration : 15 Weeks

Value of the Project : 14,500 USD

PROJECTS EXECUTED

Customer Name : Kibos Paper & Packaging Limited

Assignment : 80 TPD Kraft Paper Plant & Auxiliaries for Distillery & Pulp Plant

Duration : 15 Months

Value of the Project : 3,636,494 USD

Customer Name : Kibos Paper & Packaging Limited

Assignment : Fire Fighting System

Duration : 3 – 4 Months

Value of the Project : 274,500 USD

PROJECTS EXECUTED

Customer Name : Kibos Paper & Packaging Limited

Assignment : Water Treatment Plant. 300 m³/hr capacity

Duration : 3 Months

Value of the Project : 124,948 USD

Customer Name : Kibos Paper & Packaging Limited

Assignment : Steam Distribution System

Duration : 4 – 5 Months

Value of the Project : 160,242 USD

PROJECTS EXECUTED

Customer Name : Kibos Paper & Packaging Limited

Assignment : Electrical Distribution System (11.95 MVA Substation)

Duration : 4 - 5 Months

Value of the Project : 401,219 USD

Customer Name : Kibos Paper & Packaging Limited

Assignment : Bagasse Handling System for Pulp & Paper Plant

Duration : 4 Months

Value of the Project : 199,192 USD

PROJECTS EXECUTED

Customer Name : Butali Sugar Mills Limited

Assignment : Dynamic Juice Heater (200 m²) Heating Surface Area) for Boiling House

Duration : 3 - 4 Months

Value of the Project : 23,600 USD

Customer Name : Kibos Distillers Limited

Assignment : 22 TPD CO₂ recovery Plant

Duration : 7 Months

Value of the Project : 545,000 USD

PROJECTS EXECUTED

Customer Name : Kibos Distillers Limited

Assignment : Steam Distribution System

Duration : 4 - 5 Months

Value of the Project : 40,000 USD

Customer Name : Kibos Distillers Limited

Assignment : Electrical Distribution System (3.15 MVA Substations)

Duration : 4 - 5 Months

Value of the Project : 100,837 USD

PROJECTS EXECUTED

Customer Name : Kibos Distillers Limited

Assignment : Steam Distribution System

Duration : 4 - 5 Months

Value of the Project : 40,000 USD

Customer Name : Kibos Distillers Limited

Assignment : Water Distribution System

Duration : 4 - 5 Months

Value of the Project : 28,522 USD

PROJECTS EXECUTED

Customer Name : Kibos Distillers Limited

Assignment : Effluent Treatment Plant, 2200 m³/day capacity

Duration : 4 Months

Value of the Project : 217,380 USD

Customer Name : Horyal Investment & Holding Company Limited

Assignment : Mill Automation, Boiler & Turbine Automation

Duration : 5 - 6 Months

Value of the Project : 295,000 USD

PROJECTS EXECUTED

Customer Name : Horyal Investment & Holding Company Limited

Assignment : Effluent Treatment Plant, 500 m³/day capacity

Duration : 5 - 6 Months

Value of the Project : 83,325 USD

Customer Name : Horyal Investment & Holding Company Limited

Assignment : Cooling Tower, 300 m³/hr capacity

Duration : 4 Months

Value of the Project : 12,000 USD

PROJECTS EXECUTED

Customer Name : Kibos Sugar Refinery

Assignment : Steam & Water Distribution System

Duration : 4 - 5 Months

Value of the Project : 40,100 USD

Customer Name : Kibos Sugar Refinery

Assignment : Cooling Water System

Duration : 4 Months

Value of the Project : 97,735 USD

PROJECTS EXECUTED

Customer Name : Horyal Investment & Holding Company Limited

Assignment : HP Steam Piping & Fittings

Duration : 3 - 4 Months

Value of the Project : 197,450 USD

Customer Name : Kibos Paper & Packaging Limited

Assignment : Equipment & Machinery for expansion of Kraft Paper Plant from 80 TPD to 120 TPD

Duration : 3 - 4 Months

Value of the Project : 375,000 USD

PROJECTS EXECUTED

Customer Name : Kibos Paper & Packaging Limited

Assignment : MCC Panel, Cables, Glands & Lugs

Duration : 3 - 4 Months

Value of the Project : 95,950 USD

Customer Name : Kibos Paper & Packaging Limited

Assignment : MCC Panel

Duration : 3 Months

Value of the Project : 42,750 USD

OUR PROJECTS FOR SERVICES

PROJECTS EXECUTED

Customer Name : TSK Saudi Arabia Company limited, Saudi Arabia

Project Highlights : Green field project of 2500 TPD Sugar Refinery

EPC Contractor : ISGEC Heavy Engineering

SNP Assignment : Quality Control Services for 2500 TPD Sugar Refinery erection and commissioning at site in Yanbu, Saudi Arabia

Customer Name : TSK Electronica Y Electricidad, S.A

Project Highlights : Green field project of 2500 TPD Sugar Refinery

EPC Contractor : ISGEC Heavy Engineering

SNP Assignment : Quality Control Services for equipment and machinery for 2500 TPD Sugar Refinery at supplier end

PROJECTS EXECUTED



PROJECTS EXECUTED

SUPERVISION DURING ERECTION OF



VACUUM PANS



CHIMNEY



EVAPORATORS

PROJECTS EXECUTED

SUPERVISION DURING ERECTION OF



100 TPH BOILER



CRYSTALLIZERS

PROJECTS EXECUTED

Customer Name : Kaliro Sugar, Uganda, of ALAM GROUP.

Project Highlights : Green field project of 1650 TCD with 70 TPH Boiler & 12 MW Cogeneration expandable to 3500 TCD with 27 MW Cogeneration

EPC Contractor : ISGEC Heavy Engineering

Project Milestones :

- Started in : May 2011
- Engineering completed : August 2011
- Foundation laying : Nov 2011
- Boiler hydro test : Dec 2012
- Commissioning activities : Apr –May 2013
- Completed in : June 2013
- Plant running trouble free after commissioning and achieving more than 100 % capacity utilization with minimum losses and excellent time efficiencies.

PROJECTS EXECUTED

Customer: Kaliro Sugar, Uganda, an ALAM GROUP.



Different views of KALIRO SUGAR FACTORY

PROJECTS EXECUTED

Customer: Kaliro Sugar, Uganda, an ALAM GROUP.



48 NEW VISION, Tuesday, October 8, 2013

ADVERTISER SUPPLEMENT

SAIL boosts out-grower farming

By Donald Kirya
Aid Charles Ndabwera

Farmers in Kaliro district and surrounding areas have a reason to smile. This is because of the establishment of Kaliro Sugar and Allied Industries Limited (KASAIL) factory at Bwaka village in Kaliro. The project is aimed at transforming the welfare of rural farmers.

Right from inception, the factory provided farmers, who are the suppliers of the cane raw material, an integral part of the investment. That is why extension services from field officers and soil tests have been put in place to facilitate their smooth operations.

"As SAIL, we take great pride in the work of our out-growers. We know from the beginning that if we opened our doors to the local community and only used sugar cane grown by them, then we could make a huge positive impact upon the lives of our out-growers and the people," says Aled Alam, the managing director.

He adds that a well-run system has been developed through which farmers and workers training, extension and technical support are provided to ensure they benefit from their crops.

Alam notes that out-growers whose number is set to increase from the current 5,000 to 10,000, receive

some land for food crop production. "We encourage only those with more than five acres to plant sugar cane. We normally advise that the land be partitioned so that two acres are used for food crop growing while three are left for sugarcane," he explains.

He adds that Bwaka region has a lot of underutilized land that can be put to good use by growing sugarcane.

He, however, explains that to a bid to promote food security, individuals with less than five acres, who are allowed to grow sugar cane, are given a 50 per cent discount on the price of the cane when they sell it to the factory.

"This factory is a great achievement to the community of Kaliro and Bwaka at large. It is in line with President Yoweri Museveni's vision

of attracting and supporting investors. We request the Government to support KASAIL so that we are able to implement its programme to transform Ugandans through modern agriculture," he says.

He also notes that the company has extended support to social services like education and health of the residents in the area.

"Sugarcane is now attractive, the population keeps growing each day and now stands at over 3,000 people. The plan is to take the district authorities to develop it to the level of a town council in the near future," he observes.

Farmers also enjoy such investments as the commitment of the Government through programmes such as N.A.S.A.V. (Nutrition and Vocational Training) Education to train the youth of the farmers in the sector.

Kasail, apart from embarking on environmental campaigns, SAIL plans to build a vocational institute, hospital and schools in the area.

Some of the sugar cane supplied by out-grower farmers at Kaliro sugar factory. Photo by Donald Kirya

of attracting and supporting investors. We request the Government to support KASAIL so that we are able to implement its programme to transform Ugandans through modern agriculture," he says.

He also notes that the company has extended support to social services like education and health of the residents in the area.

"Sugarcane is now attractive, the population keeps growing each day and now stands at over 3,000 people. The plan is to take the district authorities to develop it to the level of a town council in the near future," he observes.

Farmers also enjoy such investments as the commitment of the Government through programmes such as N.A.S.A.V. (Nutrition and Vocational Training) Education to train the youth of the farmers in the sector.

Kasail, apart from embarking on environmental campaigns, SAIL plans to build a vocational institute, hospital and schools in the area.

KALIRO SUGAR

SUGAR POWER CONSULTING
Sugar, Energy and Power Plant Consultancy

AG ALAM GROUP

Sugarpower Consulting are proud to be the Project Consultant of **SUGAR & ALLIED INDUSTRIES LIMITED** 1650 TCD with 12MW co-generation plant

Our heartiest congratulations to Alam Group for their Grand Opening of the sugar factory by **H.E. President YOWERI KAGUTA MUSEVENI**

Visit us at: www.sugarnpower.com
Contact us: sugarnpower@gmail.com

On the GRAND OPENING of KALIRO SUGAR by President of UGANDA

PROJECTS EXECUTED

Customer Name : Kibos Sugar & Allied Industries Ltd, Kenya.

Project Highlights : Modernization & expansion project from 1650 TCD to 3000 TCD with 100 TPH boiler & 15 MW Cogeneration.

EPC Contractor : HITECH Engineering Corporation Pvt. Ltd

Project Milestones :

- Started in : Feb 2012
- Successful completion of Phase-I : Nov 2012
(Crushing achieved 2250 TCD)
- Successful completion of Phase-II : Dec 2014

PROJECTS EXECUTED

Customer: Kibos Sugar and Allied Industries Ltd., Kenya



PROJECTS EXECUTED

Customer : Busia Sugar Industries Ltd (formerly known as Africa Polysack Ltd.), Kenya

Project Highlights : Green field sugar plant project 3000TCD with 55 TPH boiler & 6 MW captive power expandable to 4500TCD

EPC Contractor : Walchandnagar Industries Ltd.

Project milestone:

- Contract signed off : Oct 2013
- Site survey & layout freezed : Nov 2013
- Engineering & drawing approval : Completed in June 2014
- Completed on : March 2019
- Plant running trouble free after commissioning and achieving more than 100 % capacity utilization with minimum losses and excellent time efficiencies.

PROJECTS EXECUTED



PROJECTS EXECUTED

Customer : Butali Sugar Mills Ltd., Kenya

Project highlights : Modernization & expansion of sugar plant from 1650 TCD to 2500 TCD with 45 TPH boiler & 8 MW Captive power.

Epc contractor : Isgec Heavy Engineering

Project milestone:

- Contract signed off : July 2013
- Kick off meeting : Oct 2013
- Successfully Commissioned : Oct-Nov 2015

PROJECTS EXECUTED



PROJECTS EXECUTED

Customer : Horyal Investment Holding Company Limited, Uganda

Project Highlights : Green field project of 1650 TCD with 50 TPH boiler & 6 MW captive power expandable to 3500 TCD

EPC Contractor : Uttam Sucrotech International Pvt Ltd

Project Milestone :

- Tender Documentation process : Sept 2013
- Site survey & feasibility study : Oct 2013
- Technical discussion & pre bid meeting : Nov 2013
- Contract signed : Jan 2014
- Completed on : March 2021
- Plant running trouble free after commissioning and achieving more than 100 % capacity utilization with minimum losses and excellent time efficiencies.

PROJECTS EXECUTED



PROJECTS EXECUTED

Customer : Kibos Pulp & Paper Mills Ltd, Kenya

Project Highlights : 80 TPD Unbleached Pulp production out of Bagasse
80 TPD Kraft paper plant & auxiliaries Installed capacity of
boiler 100 TPH Co-generation of 15 MW with Double
extraction cum condensing turbine

Contractor : Agro Pulping Machinery Pvt Ltd (For Pulping)
Techrevo Engineers (For Paper & BOP)

Customer : Butali Paper Mills Ltd, Kenya

Project Highlights : 60 TPD Kraft paper plant & auxiliaries

PROJECTS EXECUTED



PROJECTS EXECUTED

Customer : Kibos Distillers Ltd, Kenya

Project Highlights : 40 KLPD Distillery Plant

Contractor : PRAJ Industries Ltd.

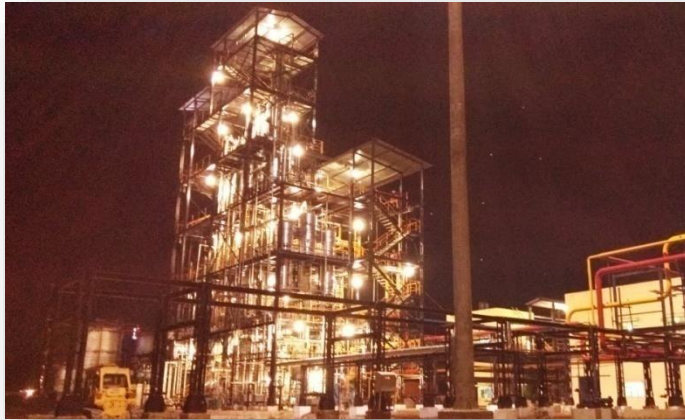
Successfully Commissioned : July 2016

Customer : Kibos Sugar Refinery Ltd, Kenya

Project Highlights : 350 TPD Sugar Refinery Plant

Contractor : ISGEC Heavy Engineering Ltd.

PROJECTS EXECUTED



PROJECTS EXECUTED



PROJECTS EXECUTED

Customer : Kibos Pulp & Paper Mills Ltd, Kenya

Project Highlights : 60 TPD White Paper Plant

Contractor : Hardayal Engineering Works private Limited

Customer : Kibos Pulp & Paper Mills Ltd, Kenya

Project Highlights : 66 TPD Pulp Bleaching Plant

Contractor : Agro Pulping Machinery Private Limited.

PROJECTS EXECUTED

Customer : Sugar Board Of Tanzania

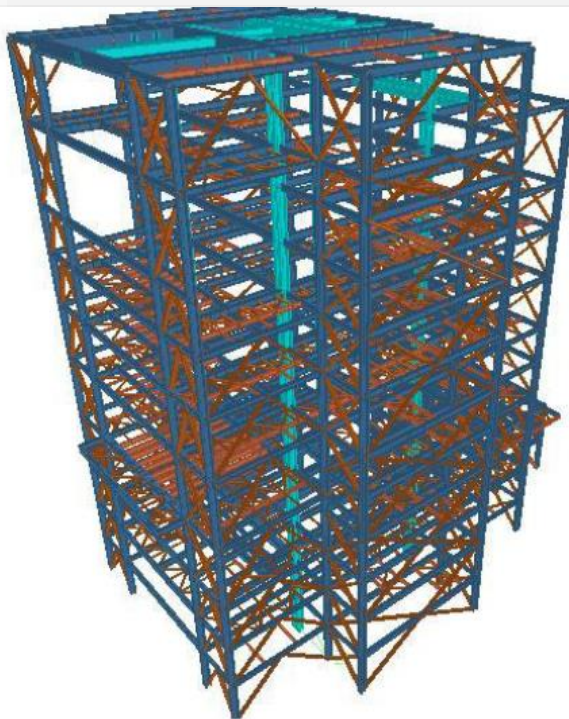
Project Highlights : Pre-feasibility Study for installing 3 mini sugar plants in Kilombero, Kilosa & Mvomero,



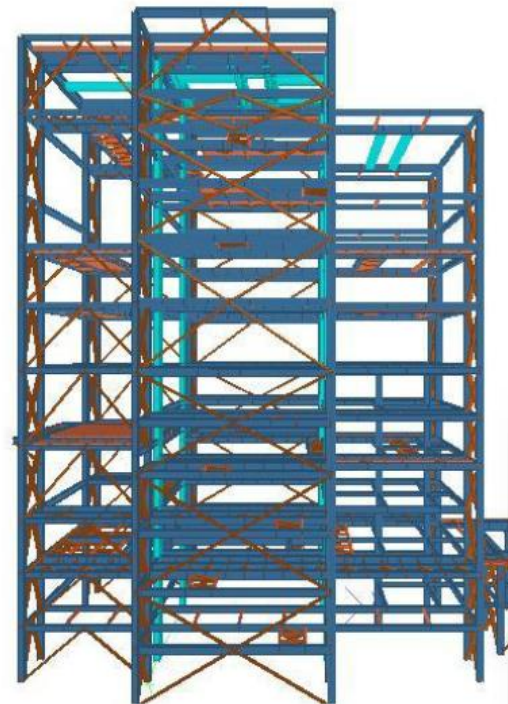
TECHNICAL CAPABILITIES

- **The Engineering and Design offices are fully computerized with latest Software.**
- **The Engineering Section is supported by design engineers and engineering assistants.**
- **The Company's technical library is provided with engineering, financial and contract reference books, periodicals and literature updated for use by the professional staff.**
- **The Company has on its roles, permanent and associated Staff of Engineers, Sugar Technologists, Agronomists, Agricultural Specialists, Economists and Financial Analysts.**
- **Capable to carry out STAAD Analysis.**
- **Facilities to carry out live video conference with the customers through skype, MS teams.**

TECHNICAL CAPABILITIES



Boiler Isometric View



Boiler Side View (Along Length)

STAAD Analysis

```

*****
*          STAAD.Pro          Build 04          *
*          Version 2007          *
*          Proprietary Program of          *
*          Research Engineers, Intl.          *
*          Date= SEP 19, 2012          *
*          Time= 11:58:21          *
*          USER ID:          *
*****

1. STAAD SPACE
INPUT FILE: K:\K\Assembly\1-18 Sep.RTD
2. START JOB INFORMATION
3. ENGINEER DATE 19-AUG-12
4. END JOB INFORMATION
5. SHEET NUMBER 75
6. UNIT SYSTEM MM
7. JOINT COORDINATES
8. 100 -6.5 2.63 -3j 101 -6.5 2.63 0j 102 -6.5 2.63 9.2j 103 -6.5 2.63 12.2
9. 104 -4.34 2.63 -3j 105 -4.34 2.63 0j 106 -4.34 2.63 9.2j 107 -4.34 2.63 12.2
10. 108 -2.17 2.63 -3j 109 -2.17 2.63 0j 110 -2.17 2.63 9.2j 111 -2.17 2.63 12.2
11. 112 0 2.63 -6j 113 0 2.63 -3j 114 0 2.63 0j 115 0 2.63 9.2j 116 0 2.63 12.2
12. 117 0 2.63 15.2j 118 2.35 2.63 -3j 119 2.35 2.63 0j 120 2.35 2.63 9.2
13. 121 2.35 2.63 12.2j 122 4.7 2.63 -3j 123 4.7 2.63 0j 124 4.7 2.63 9.2
14. 125 4.7 2.63 12.2j 126 7.05 2.63 -3j 127 7.05 2.63 0j 128 7.05 2.63 9.2
15. 129 7.05 2.63 12.2j 130 8.15 2.63 -6j 131 8.15 2.63 -5.02j 132 8.15 2.63 -4.01
16. 133 8.15 2.63 -3j 134 8.15 2.63 12.2j 135 8.15 2.63 12.2j 136 8.15 2.63 14.2
17. 137 8.15 2.63 15.2j 138 9.4 2.63 -6j 139 9.4 2.63 -5.02j 140 9.4 2.63 -4.01
18. 141 9.4 2.63 -3j 142 9.4 2.63 0j 143 9.4 2.63 9.2j 144 9.4 2.63 12.2
19. 145 9.4 2.63 13.2j 146 9.4 2.63 14.2j 147 9.4 2.63 15.2j 148 12.1 2.63 -3j
20. 149 12.1 2.63 0j 150 12.1 2.63 9.2j 151 12.1 2.63 12.2j 152 12.7 2.63 0
21. 153 12.7 2.63 4.6j 154 12.7 2.63 9.2j 155 14.7 2.63 -3j 156 14.7 2.63 0
22. 157 14.7 2.63 9.2j 158 14.7 2.63 12.2j 159 15.7 2.63 0j 160 15.7 2.63 4.6
23. 161 15.7 2.63 9.2j 162 17.2 2.63 -3j 163 17.2 2.63 0j 164 17.2 2.63 0.67
24. 165 17.2 2.63 4.6j 166 17.2 2.63 8.54j 167 17.2 2.63 9.2j 168 17.2 2.63 12.2
25. 169 19.2 2.63 0.67j 170 19.2 2.63 4.6j 171 19.2 2.63 8.54j 172 21.7 2.63 0.67
26. 173 21.7 2.63 4.6j 174 21.7 2.63 8.54j 175 24.1 2.63 0.67j 176 24.1 2.63 4.6
27. 177 24.1 2.63 8.54j 180 -6.5 5.25 -3j 181 -6.5 5.25 -1.5j 182 -6.5 5.25 0
28. 183 -6.5 5.25 2.58j 184 -6.5 5.25 4.6j 185 -6.5 5.25 7.06j 186 -6.5 5.25 9.21
29. 187 -6.5 5.25 10.7j 188 -6.5 5.25 12.2j 189 -6.5 5.25 15j 190 -6.5 5.25 17.5
30. 191 -6.5 5.25 20j 192 -6.5 5.25 22.5j 193 -6.5 5.25 25j 194 -6.5 5.25 27.5
31. 195 -6.5 5.25 30j 196 -6.5 5.25 32.5j 197 -6.5 5.25 35j 198 -6.5 5.25 37.5
32. 199 -6.5 5.25 40j 200 -6.5 5.25 42.5j 201 -6.5 5.25 45j 202 -6.5 5.25 47.5
33. 203 -6.5 5.25 50j 204 -6.5 5.25 52.5j 205 -6.5 5.25 55j 206 -6.5 5.25 57.5
34. 207 -6.5 5.25 60j 208 -6.5 5.25 62.5j 209 -6.5 5.25 65j 210 -6.5 5.25 67.5
35. 211 -6.5 5.25 70j 212 -6.5 5.25 72.5j 213 -6.5 5.25 75j 214 -6.5 5.25 77.5
36. 215 -6.5 5.25 80j 216 -6.5 5.25 82.5j 217 -6.5 5.25 85j 218 -6.5 5.25 87.5
37. 219 -6.5 5.25 90j 220 -6.5 5.25 92.5j 221 -6.5 5.25 95j 222 -6.5 5.25 97.5
38. 223 -6.5 5.25 100j 224 -6.5 5.25 102.5j 225 -6.5 5.25 105j 226 -6.5 5.25 107.5
39. 227 -6.5 5.25 110j 228 -6.5 5.25 112.5j 229 -6.5 5.25 115j 230 -6.5 5.25 117.5
40. 231 -6.5 5.25 120j 232 -6.5 5.25 122.5j 233 -6.5 5.25 125j 234 -6.5 5.25 127.5
41. 235 -6.5 5.25 130j 236 -6.5 5.25 132.5j 237 -6.5 5.25 135j 238 -6.5 5.25 137.5
42. 239 -6.5 5.25 140j 240 -6.5 5.25 142.5j 241 -6.5 5.25 145j 242 -6.5 5.25 147.5
43. 243 -6.5 5.25 150j 244 -6.5 5.25 152.5j 245 -6.5 5.25 155j 246 -6.5 5.25 157.5
44. 247 -6.5 5.25 160j 248 -6.5 5.25 162.5j 249 -6.5 5.25 165j 250 -6.5 5.25 167.5
45. 251 -6.5 5.25 170j 252 -6.5 5.25 172.5j 253 -6.5 5.25 175j 254 -6.5 5.25 177.5
46. 255 -6.5 5.25 180j 256 -6.5 5.25 182.5j 257 -6.5 5.25 185j 258 -6.5 5.25 187.5
47. 259 -6.5 5.25 190j 260 -6.5 5.25 192.5j 261 -6.5 5.25 195j 262 -6.5 5.25 197.5
48. 263 -6.5 5.25 200j 264 -6.5 5.25 202.5j 265 -6.5 5.25 205j 266 -6.5 5.25 207.5
49. 267 -6.5 5.25 210j 268 -6.5 5.25 212.5j 269 -6.5 5.25 215j 270 -6.5 5.25 217.5
50. 271 -6.5 5.25 220j 272 -6.5 5.25 222.5j 273 -6.5 5.25 225j 274 -6.5 5.25 227.5
51. 275 -6.5 5.25 230j 276 -6.5 5.25 232.5j 277 -6.5 5.25 235j 278 -6.5 5.25 237.5
52. 279 -6.5 5.25 240j 280 -6.5 5.25 242.5j 281 -6.5 5.25 245j 282 -6.5 5.25 247.5
53. 283 -6.5 5.25 250j 284 -6.5 5.25 252.5j 285 -6.5 5.25 255j 286 -6.5 5.25 257.5
54. 287 -6.5 5.25 260j 288 -6.5 5.25 262.5j 289 -6.5 5.25 265j 290 -6.5 5.25 267.5
55. 291 -6.5 5.25 270j 292 -6.5 5.25 272.5j 293 -6.5 5.25 275j 294 -6.5 5.25 277.5
56. 295 -6.5 5.25 280j 296 -6.5 5.25 282.5j 297 -6.5 5.25 285j 298 -6.5 5.25 287.5
57. 299 -6.5 5.25 290j 300 -6.5 5.25 292.5j 301 -6.5 5.25 295j 302 -6.5 5.25 297.5
58. 303 -6.5 5.25 300j 304 -6.5 5.25 302.5j 305 -6.5 5.25 305j 306 -6.5 5.25 307.5
59. 307 -6.5 5.25 310j 308 -6.5 5.25 312.5j 309 -6.5 5.25 315j 310 -6.5 5.25 317.5
60. 311 -6.5 5.25 320j 312 -6.5 5.25 322.5j 313 -6.5 5.25 325j 314 -6.5 5.25 327.5
61. 315 -6.5 5.25 330j 316 -6.5 5.25 332.5j 317 -6.5 5.25 335j 318 -6.5 5.25 337.5
62. 319 -6.5 5.25 340j 320 -6.5 5.25 342.5j 321 -6.5 5.25 345j 322 -6.5 5.25 347.5
63. 323 -6.5 5.25 350j 324 -6.5 5.25 352.5j 325 -6.5 5.25 355j 326 -6.5 5.25 357.5
64. 327 -6.5 5.25 360j 328 -6.5 5.25 362.5j 329 -6.5 5.25 365j 330 -6.5 5.25 367.5
65. 331 -6.5 5.25 370j 332 -6.5 5.25 372.5j 333 -6.5 5.25 375j 334 -6.5 5.25 377.5
66. 335 -6.5 5.25 380j 336 -6.5 5.25 382.5j 337 -6.5 5.25 385j 338 -6.5 5.25 387.5
67. 339 -6.5 5.25 390j 340 -6.5 5.25 392.5j 341 -6.5 5.25 395j 342 -6.5 5.25 397.5
68. 343 -6.5 5.25 400j 344 -6.5 5.25 402.5j 345 -6.5 5.25 405j 346 -6.5 5.25 407.5
69. 347 -6.5 5.25 410j 348 -6.5 5.25 412.5j 349 -6.5 5.25 415j 350 -6.5 5.25 417.5
70. 351 -6.5 5.25 420j 352 -6.5 5.25 422.5j 353 -6.5 5.25 425j 354 -6.5 5.25 427.5
71. 355 -6.5 5.25 430j 356 -6.5 5.25 432.5j 357 -6.5 5.25 435j 358 -6.5 5.25 437.5
72. 359 -6.5 5.25 440j 360 -6.5 5.25 442.5j 361 -6.5 5.25 445j 362 -6.5 5.25 447.5
73. 363 -6.5 5.25 450j 364 -6.5 5.25 452.5j 365 -6.5 5.25 455j 366 -6.5 5.25 457.5
74. 367 -6.5 5.25 460j 368 -6.5 5.25 462.5j 369 -6.5 5.25 465j 370 -6.5 5.25 467.5
75. 371 -6.5 5.25 470j 372 -6.5 5.25 472.5j 373 -6.5 5.25 475j 374 -6.5 5.25 477.5
76. 375 -6.5 5.25 480j 376 -6.5 5.25 482.5j 377 -6.5 5.25 485j 378 -6.5 5.25 487.5
77. 379 -6.5 5.25 490j 380 -6.5 5.25 492.5j 381 -6.5 5.25 495j 382 -6.5 5.25 497.5
78. 383 -6.5 5.25 500j 384 -6.5 5.25 502.5j 385 -6.5 5.25 505j 386 -6.5 5.25 507.5
79. 387 -6.5 5.25 510j 388 -6.5 5.25 512.5j 389 -6.5 5.25 515j 390 -6.5 5.25 517.5
80. 391 -6.5 5.25 520j 392 -6.5 5.25 522.5j 393 -6.5 5.25 525j 394 -6.5 5.25 527.5
81. 395 -6.5 5.25 530j 396 -6.5 5.25 532.5j 397 -6.5 5.25 535j 398 -6.5 5.25 537.5
82. 399 -6.5 5.25 540j 400 -6.5 5.25 542.5j 401 -6.5 5.25 545j 402 -6.5 5.25 547.5
83. 403 -6.5 5.25 550j 404 -6.5 5.25 552.5j 405 -6.5 5.25 555j 406 -6.5 5.25 557.5
84. 407 -6.5 5.25 560j 408 -6.5 5.25 562.5j 409 -6.5 5.25 565j 410 -6.5 5.25 567.5
85. 411 -6.5 5.25 570j 412 -6.5 5.25 572.5j 413 -6.5 5.25 575j 414 -6.5 5.25 577.5
86. 415 -6.5 5.25 580j 416 -6.5 5.25 582.5j 417 -6.5 5.25 585j 418 -6.5 5.25 587.5
87. 419 -6.5 5.25 590j 420 -6.5 5.25 592.5j 421 -6.5 5.25 595j 422 -6.5 5.25 597.5
88. 423 -6.5 5.25 600j 424 -6.5 5.25 602.5j 425 -6.5 5.25 605j 426 -6.5 5.25 607.5
89. 427 -6.5 5.25 610j 428 -6.5 5.25 612.5j 429 -6.5 5.25 615j 430 -6.5 5.25 617.5
90. 431 -6.5 5.25 620j 432 -6.5 5.25 622.5j 433 -6.5 5.25 625j 434 -6.5 5.25 627.5
91. 435 -6.5 5.25 630j 436 -6.5 5.25 632.5j 437 -6.5 5.25 635j 438 -6.5 5.25 637.5
92. 439 -6.5 5.25 640j 440 -6.5 5.25 642.5j 441 -6.5 5.25 645j 442 -6.5 5.25 647.5
93. 443 -6.5 5.25 650j 444 -6.5 5.25 652.5j 445 -6.5 5.25 655j 446 -6.5 5.25 657.5
94. 447 -6.5 5.25 660j 448 -6.5 5.25 662.5j 449 -6.5 5.25 665j 450 -6.5 5.25 667.5
95. 451 -6.5 5.25 670j 452 -6.5 5.25 672.5j 453 -6.5 5.25 675j 454 -6.5 5.25 677.5
96. 455 -6.5 5.25 680j 456 -6.5 5.25 682.5j 457 -6.5 5.25 685j 458 -6.5 5.25 687.5
97. 459 -6.5 5.25 690j 460 -6.5 5.25 692.5j 461 -6.5 5.25 695j 462 -6.5 5.25 697.5
98. 463 -6.5 5.25 700j 464 -6.5 5.25 702.5j 465 -6.5 5.25 705j 466 -6.5 5.25 707.5
99. 467 -6.5 5.25 710j 468 -6.5 5.25 712.5j 469 -6.5 5.25 715j 470 -6.5 5.25 717.5
100. 471 -6.5 5.25 720j 472 -6.5 5.25 722.5j 473 -6.5 5.25 725j 474 -6.5 5.25 727.5
101. 475 -6.5 5.25 730j 476 -6.5 5.25 732.5j 477 -6.5 5.25 735j 478 -6.5 5.25 737.5
102. 479 -6.5 5.25 740j 480 -6.5 5.25 742.5j 481 -6.5 5.25 745j 482 -6.5 5.25 747.5
103. 483 -6.5 5.25 750j 484 -6.5 5.25 752.5j 485 -6.5 5.25 755j 486 -6.5 5.25 757.5
104. 487 -6.5 5.25 760j 488 -6.5 5.25 762.5j 489 -6.5 5.25 765j 490 -6.5 5.25 767.5
105. 491 -6.5 5.25 770j 492 -6.5 5.25 772.5j 493 -6.5 5.25 775j 494 -6.5 5.25 777.5
106. 495 -6.5 5.25 780j 496 -6.5 5.25 782.5j 497 -6.5 5.25 785j 498 -6.5 5.25 787.5
107. 499 -6.5 5.25 790j 500 -6.5 5.25 792.5j 501 -6.5 5.25 795j 502 -6.5 5.25 797.5
108. 503 -6.5 5.25 800j 504 -6.5 5.25 802.5j 505 -6.5 5.25 805j 506 -6.5 5.25 807.5
109. 507 -6.5 5.25 810j 508 -6.5 5.25 812.5j 509 -6.5 5.25 815j 510 -6.5 5.25 817.5
110. 511 -6.5 5.25 820j 512 -6.5 5.25 822.5j 513 -6.5 5.25 825j 514 -6.5 5.25 827.5
111. 515 -6.5 5.25 830j 516 -6.5 5.25 832.5j 517 -6.5 5.25 835j 518 -6.5 5.25 837.5
112. 519 -6.5 5.25 840j 520 -6.5 5.25 842.5j 521 -6.5 5.25 845j 522 -6.5 5.25 847.5
113. 523 -6.5 5.25 850j 524 -6.5 5.25 852.5j 525 -6.5 5.25 855j 526 -6.5 5.25 857.5
114. 527 -6.5 5.25 860j 528 -6.5 5.25 862.5j 529 -6.5 5.25 865j 530 -6.5 5.25 867.5
115. 531 -6.5 5.25 870j 532 -6.5 5.25 872.5j 533 -6.5 5.25 875j 534 -6.5 5.25 877.5
116. 535 -6.5 5.25 880j 536 -6.5 5.25 882.5j 537 -6.5 5.25 885j 538 -6.5 5.25 887.5
117. 539 -6.5 5.25 890j 540 -6.5 5.25 892.5j 541 -6.5 5.25 895j 542 -6.5 5.25 897.5
118. 543 -6.5 5.25 900j 544 -6.5 5.25 902.5j 545 -6.5 5.25 905j 546 -6.5 5.25 907.5
119. 547 -6.5 5.25 910j 548 -6.5 5.25 912.5j 549 -6.5 5.25 915j 550 -6.5 5.25 917.5
120. 551 -6.5 5.25 920j 552 -6.5 5.25 922.5j 553 -6.5 5.25 925j 554 -6.5 5.25 927.5
121. 555 -6.5 5.25 930j 556 -6.5 5.25 932.5j 557 -6.5 5.25 935j 558 -6.5 5.25 937.5
122. 559 -6.5 5.25 940j 560 -6.5 5.25 942.5j 561 -6.5 5.25 945j 562 -6.5 5.25 947.5
123. 563 -6.5 5.25 950j 564 -6.5 5.25 952.5j 565 -6.5 5.25 955j 566 -6.5 5.25 957.5
124. 567 -6.5 5.25 960j 568 -6.5 5.25 962.5j 569 -6.5 5.25 965j 570 -6.5 5.25 967.5
125. 571 -6.5 5.25 970j 572 -6.5 5.25 972.5j 573 -6.5 5.25 975j 574 -6.5 5.25 977.5
126. 575 -6.5 5.25 980j 576 -6.5 5.25 982.5j 577 -6.5 5.25 985j 578 -6.5 5.25 987.5
127. 579 -6.5 5.25 990j 580 -6.5 5.25 992.5j 581 -6.5 5.25 995j 582 -6.5 5.25 997.5
128. 583 -6.5 5.25 1000j 584 -6.5 5.25 1002.5j 585 -6.5 5.25 1005j 586 -6.5 5.25 1007.5
129. 587 -6.5 5.25 1010j 588 -6.5 5.25 1012.5j 589 -6.5 5.25 1015j 590 -6.5 5.25 1017.5
130. 591 -6.5 5.25 1020j 592 -6.5 5.25 1022.5j 593 -6.5 5.25 1025j 594 -6.5 5.25 1027.5
131. 595 -6.5 5.25 1030j 596 -6.5 5.25 1032.5j 597 -6.5 5.25 1035j 598 -6.5 5.25 1037.5
132. 599 -6.5 5.25 1040j 600 -6.5 5.25 1042.5j 601 -6.5 5.25 1045j 602 -6.5 5.25 1047.5
133. 603 -6.5 5.25 1050j 604 -6.5 5.25 1052.5j 605 -6.5 5.25 1055j 606 -6.5 5.25 1057.5
134. 607 -6.5 5.25 1060j 608 -6.5 5.25 1062.5j 609 -6.5 5.25 1065j 610 -6.5 5.25 1067.5
135. 611 -6.5 5.25 1070j 612 -6.5 5.25 1072.5j 613 -6.5 5.25 1075j 614 -6.5 5.25 1077.5
136. 615 -6.5 5.25 1080j 616 -6.5 5.25 1082.5j 617 -6.5 5.25 1085j 618 -6.5 5.25 1087.5
137. 619 -6.5 5.25 1090j 620 -6.5 5.25 1092.5j 621 -6.5 5.25 1095j 622 -6.5 5.25 1097.5
138. 623 -6.5 5.25 1100j 624 -6.5 5.25 1102.5j 625 -6.5 5.25 1105j 626 -6.5 5.25 1107.5
139. 627 -6.5 5.25 1110j 628 -6.5 5.25 1112.5j 629 -6.5 5.25 1115j 630 -6.5 5.25 1117.5
140. 631 -6.5 5.25 1120j 632 -6.5 5.25 1122.5j 633 -6.5 5.25 1125j 634 -6.5 5.25 1127.5
141. 635 -6.5 5.25 1130j 636 -6.5 5.25 1132.5j 637 -6.5 5.25 1135j 638 -6.5 5.25 1137.5
142. 639 -6.5 5.25 1140j 640 -6.5 5.25 1142.5j 641 -6.5 5.25 1145j 642 -6.5 5.25 1147.5
143. 643 -6.5 5.25 1150j 644 -6.5 5.25 1152.5j 645 -6.5 5.25 1155j 646 -6.5 5.25 1157.5
144. 647 -6.5 5.25 1160j 648 -6.5 5.25 1162.5j 649 -6.5 5.25 1165j 650 -6.5 5.25 1167.5
145. 651 -6.5 5.25 1170j 652 -6.5 5.25 1172.5j 653 -6.5 5.25 1175j 654 -6.5 5.25 1177.5
146. 655 -6.5 5.25 1180j 656 -6.5 5.25 1182.5j 657 -6.5 5.25 1185j 658 -6.5 5.25 1187.5
147. 659 -6.5 5.25 1190j 660 -6.5 5.25 1192.5j 661 -6.5 5.25 1195j 662 -6.5 5.25 1197.5
148. 663 -6.5 5.25 1200j 664 -6.5 5.25 1202.5j 665 -6.5 5.25 1205j 666 -6.5 5.25 1207.5
149. 667 -6.5 5.25 1210j 668 -6.5 5.25 1212.5j 669 -6.5 5.25 1215j 670 -6.5 5.25 1217.5
150. 671 -6.5 5.25 1220j 672 -6.5 5.25 1222.5j 673 -6.5 5.25 1225j 674 -6.5 5.25 1227.5
151. 675 -6.5 5.25 1230j 676 -6.5 5.25 1232.5j 677 -6.5 5.25 1235j 678 -6.5 5.25 1237.5
152. 679 -6.5 5.25 1240j 680 -6.5 5.25 1242.5j 681 -6.5 5.25 1245j 682 -6.5 5.25 1247.5
153. 683 -6.5 5.25 1250j 684 -6.5 5.25 1252.5j 685 -6.5 5.25 1255j 686 -6.5 5.25 1257.5
154. 687 -6.5 5.25 1260j 688 -6.5 5.25 1262.5j 689 -6.5 5.25 1265j 690 -6.5 5.25 1267.5
155. 691 -6.5 5.25 1270j 692 -6.5 5.25 1272.5j 693 -6.5 5.25 1275j 694 -6.5 5.25 1277.5
156. 695 -6.5 5.25 1280j 696 -6.5 5.25 1282.5j 697 -6.5 5.25 1285j 698 -6.5 5.25 1287.5
157.
```

INTERNATIONAL PARTICIPATIONS



BOILER WORLD EXPO, KENYA



PAPEREX, GREATER NOIDA WEST



CII CONCLAVE, UGANDA



STAI 2019, KOLKATA

INTERNATIONAL PARTICIPATIONS



2ND INDIA SUGAR EXPO, NAIROBI



4TH IAPSIT INTERNATIONAL SUGAR EXPO, NEW DELHI



INDIA SHOW, JAKARTA



INDIA SHOW, COLOMBO

**HORYAL INVESTMENTS HOLDING
COMPANY LIMITED**
P.O. BOX 27760 Tel: 0414-28674, 077279022
KAMPALA

SEAGRAMPOWER CONSULTING,
B-12, 3RD FLOOR, R.D.,
KADAMBARA CENTRAL CENTER,
GRAZIABAD 20102
INDIA.

Kind Attention,
Mr. Jeyaraj Sanku Sahi

Dear Sir,

**RE: CONTRACT FOR PROJECT MANAGEMENT SERVICES FOR SETTING UP A
GREEN FIELD SUGAR PLANT IN TAMILNADU**

We are pleased to inform you that Sugarmaster Consulting has been selected by us to prepare project management and surveillance services for setting up that new sugar plant with the scope as defined in your proposal S/NP/CON/001 dated 29/05/2013 and our subsequent discussions on 11.06.2013 in Gwalior.


Sugarmaster Consulting shall provide services for the sugar factory plant and machinery as set out below:

Section – 1: Scope of Services and Deliverables

1. Pre-Engineering:

- This includes, sufficient engineering to determine the duty specifications for the equipment supplier.
- Technology selection for the Sugar factory and due diligence visits to the reference plants of the potential suppliers.
- Follow up with the financial consultant and assisting in preparing the bankable financial model.
- Provide assistance in finalizing the plant layouts, overall site General Arrangement drawing and compilation of basic engineering data.
- Develop a procurement philosophy for work package.

###



KIND SUGAR & ALLIED INDUSTRIES LIMITED

Reference: KSAIL / E/PROP/NO/5W/12-13

P.O. BOX 3115 KIBUMU - 40100
Tel: +254 87-2028150 / 2 / 3 / 4 / 5
Fax: +254 87-2028150 / 2021468
E-Mail: headsoffice@kindsugar.com
KENYA EAST AFRICA

Date: 29th February 2012

To,
Supersugarcro Consulting,
17 Place, 8-11, ROC,
Ghaubailad
India

APPOINTMENT AS PROJECT MANAGERS FOR SUGAR PLANT EXPANSION AND COGENERATION PROJECT


Dear Sir,


It is pleased to inform you that Supersugarcro Consulting has been selected by us as Project Managers for providing services for expanding our sugar plant involving capacity from 75500 to 120500 with a new cogeneration facility of 45 MW with the scope as defined under/above:


Supersugarcro Consulting shall provide services for the sugar factory plant and machinery as set out below:

1. Pre-Engineering:

- This includes, sufficient engineering to determine the duty specifications for the equipment suppliers;
- Technology selection for the Sugar Factory and due diligence visits to the reference plants of the potential suppliers;
- Follow up with the financial consultant and assisting in preparing the bankable financial model;
- Provide assistance in finalising the plant layout, overall the General Arrangement drawing and completion of basic engineering data;
- Develop a procurement philosophy for work package
- Sugar & Allied Industries shall however provide the local knowledge, familiarisation and appropriate access to relevant technical information.



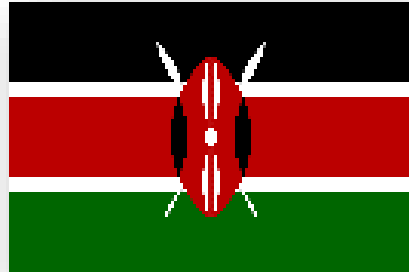




CREDENTIALS



GLOBAL PRESENCE



CONTACT US

Admin. Office:

**B-12, 3rd & 4th Floor, RDC, Raj Nagar, Ghaziabad -201002,
UP, INDIA**

Registered Office:

13, 2nd Floor, Mausam Vihar, Delhi – 110051, INDIA

Phone : +91-120-4234526, 4134368

E-mail : marketing@sugarnpower.com, sales@sugarnpower.com

Website : www.sugarnpower.com





THANK YOU